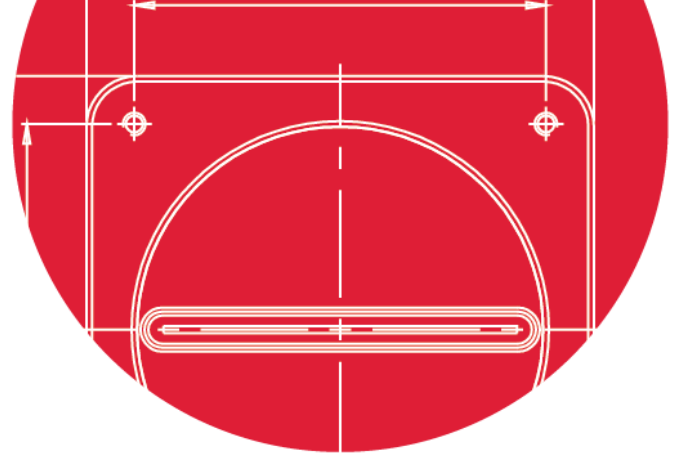


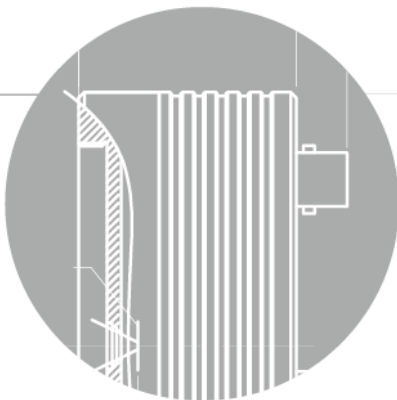
# VT series

## User Manual



English

VT-3K7C  
VT-4K5C  
VT-4K7C  
VT-4K14C  
VT-6K3.5C  
VT-9K7C  
VT-12K5C  
VT-18K3.5C



# VIEWWORKS

## Revision History

Version	Date	Description
1.0	2016-03-04	Initial Release
1.1	2017-05-10	Added the following models: <ul style="list-style-type: none"> <li>▫ VT-3K7C-E100</li> <li>▫ VT-3K7C-H100</li> <li>▫ VT-4K5C-E100</li> <li>▫ VT-4K5C-H100</li> <li>▫ VT-6K3.5C-E100</li> <li>▫ VT-6K3.5C-H100</li> </ul>
1.2	2017-09-07	Added the STROBE tab Updated camera mechanical dimensions (Added a connector for Strobe Controller) Added the Trigger Statistics feature Added the Lookup Table feature
1.3	2018-05-31	Added the supported Pixel Data Format values depending on the Tap setting
1.4	2021-01-21	Revised model names Added the following models: <ul style="list-style-type: none"> <li>▫ VT-4K7C-E120A-32</li> <li>▫ VT-4K14C-E120A-16</li> <li>▫ VT-9K7C-E80A-32</li> <li>▫ VT-12K5C-E60A-64</li> <li>▫ VT-18K3.5C-E40A-64</li> </ul> Revised camera mechanical dimensions
1.5	2021-05-12	Corrected the orientation of the 6-pin connector in the user manual
	2021-09-24	Deleted the “Exposure Control” text in the “Main Features”
1.6	2022-06-03	Revised the mechanical dimension
	2022-06-07	Modified an error in the description of the “Direction” section Added information on the “TDI Stages” section for VT-4K14C-H120
1.7	2024-01-17	Added chapter 9.8 Optical Black Clamp
1.8	2024-03-03	Added information in chapter 2 Warranty Added chapter 3.3 UL Added chapter 5.5.2 Fixing the Camera Revised references in chapter 7.3 Power Input Receptacle
1.9	2024-04-25	Changed 5.5.2 Fixing the Camera
2.0	2024-05-13	Changed 9.19 Camera Pixel Clock (Added items)

# Contents

<b>1</b>	<b>Precautions .....</b>	<b>6</b>
<b>2</b>	<b>Warranty .....</b>	<b>8</b>
<b>3</b>	<b>Compliance &amp; Certifications .....</b>	<b>9</b>
3.1	FCC Compliance .....	9
3.2	CE: DoC .....	9
3.3	UL .....	9
3.4	KC .....	9
<b>4</b>	<b>Package Components .....</b>	<b>10</b>
<b>5</b>	<b>Product Specifications .....</b>	<b>11</b>
5.1	Overview .....	11
5.2	Specifications .....	12
5.3	Camera Block Diagram .....	20
5.4	Spectral Response .....	21
5.5	Mechanical Specification .....	22
5.5.1	Camera Mounting and Heat Dissipation .....	23
5.5.2	Fixing the Camera .....	24
<b>6</b>	<b>Connecting the Camera.....</b>	<b>25</b>
6.1	Precaution to Center the Image Sensor.....	25
6.2	Controlling the Camera.....	25
<b>7</b>	<b>Camera Interface.....</b>	<b>26</b>
7.1	General Description.....	26
7.2	Camera Link MDR/SDR Connector .....	26
7.3	Power Input Receptacle .....	30
7.4	Control I/O Receptacle .....	31
7.5	Trigger / Direction Input Circuit .....	32
7.6	Strobe Output Circuit.....	32
<b>8</b>	<b>Acquisition Control.....</b>	<b>33</b>
8.1	Line Start Trigger.....	33
8.1.1	Trigger Mode .....	33
8.1.2	Using an External/CC1 Trigger Signal.....	36

8.1.3	Rescaler Mode.....	37
8.1.4	Trigger Statistics .....	38
8.2	Maximum Allowed Line Rate .....	39
<b>9</b>	<b>Camera Features.....</b>	<b>40</b>
9.1	Operation Mode.....	40
9.2	TDI Stages .....	41
9.3	Direction.....	43
9.4	Region of Interest.....	44
9.4.1	Setting the ROI .....	44
9.5	Binning .....	46
9.6	Data Bit .....	47
9.7	Gain and Black Level.....	48
9.8	Optical Black Clamp .....	49
9.9	LUT .....	49
9.10	Dark Signal Non-uniformity Correction .....	51
9.10.1	Generating and Saving User DSNU Correction Values .....	52
9.11	Photo Response Non-uniformity Correction.....	54
9.11.1	Generating and Saving User PRNU Correction Values .....	55
9.12	Reverse X .....	56
9.13	Camera Link Output .....	57
9.14	Strobe Mode.....	58
9.15	Temperature Monitor .....	59
9.16	Status LED .....	59
9.17	Test Image.....	60
9.18	Pre-emphasis (M72 based VT Series Only).....	62
9.19	Camera Link Pixel Clock .....	62
9.20	Field Upgrade.....	63
<b>10</b>	<b>Camera Configuration .....</b>	<b>64</b>
10.1	Setting Commands.....	64
10.2	User Set Control.....	66
10.2.1	Factory Default Setting Values .....	67
10.3	Command List.....	68
<b>11</b>	<b>Configurator GUI.....</b>	<b>74</b>

---

11.1	Camera Scan .....	74
11.2	Menu .....	75
11.2.1	File .....	75
11.2.2	Start-Up .....	76
11.2.3	Tool .....	77
11.2.4	About .....	78
11.3	Tab .....	79
11.3.1	VIEW Tab .....	79
11.3.2	MODE/EXP Tab .....	80
11.3.3	VIDEO Tab .....	81
11.3.4	STROBE Tab .....	82
11.3.5	LUT Tab .....	83
<b>12</b>	<b>Troubleshooting.....</b>	<b>84</b>
<b>Appendix A</b>	<b>Field Upgrade.....</b>	<b>85</b>
A.1	MCU .....	85
A.2	FPGA .....	88
<b>Appendix B</b>	<b>LUT Download .....</b>	<b>89</b>
B.1	Gamma Graph Download .....	89
B.2	CSV File Download .....	91
<b>Appendix C</b>	<b>Correction Control.....</b>	<b>93</b>
C.1	Adjusting and Saving Additional DSNU Correction Value .....	94
C.2	Adjusting and Saving Additional PRNU Correction Value .....	95

# 1 Precautions

## General



Do not drop, disassemble, repair or alter the device. Doing so may damage the camera electronics and cause an electric shock.

Do not let children touch the device without supervision.

Stop using the device and contact the nearest dealer or manufacturer for technical assistance if liquid such as water, drinks or chemicals gets into the device.

Do not touch the device with wet hands. Doing so may cause an electric shock.

Make sure that the temperature of the camera does not exceed the temperature range specified in [5.2 Specifications](#). Otherwise the device may be damaged by extreme temperatures.

## Installation and Maintenance



Do not install in dusty or dirty areas – or near an air conditioner or heater to reduce the risk of damage to the device.

Avoid installing and operating in an extreme environment where vibration, heat, humidity, dust, strong magnetic fields, explosive/corrosive mists or gases are present.

Do not apply excessive vibration and shock to the device. This may damage the device.

Avoid direct exposure to a high intensity light source. This may damage the image sensor.

Do not install the device under unstable lighting conditions. Severe lighting change will affect the quality of the image produced by the device.

Do not use solvents or thinners to clean the surface of the device. This can damage the surface finish.

## Power Supply



Applying incorrect power can damage the camera. If the voltage applied to the camera is greater or less than the camera's nominal voltage, the camera may be damaged or operate erratically. Please refer to [5.2 Specifications](#) for the camera's nominal voltage.

※ Vieworks Co., Ltd. does NOT provide power supplies with the devices.

Make sure the power is turned off before connecting the power cord to the camera. Otherwise, damage to the camera may result.

## Cleaning the Sensor Surface

Avoid cleaning the surface of the camera's sensor if possible. If you have dust or foreign matter on the sensor surface, use a soft lint free cotton bud dampened with a small quantity of high quality lens cleaner. Because electrostatic discharge (ESD) can damage the sensor, you must use a cloth (e.g. cotton) that will not generate static during cleaning.



### **Avoid dust or foreign matter on the sensor surface.**

The camera is shipped with a protective plastic seal on the camera front. To prevent collecting dust or foreign matter on the camera sensor, make sure that you always put the protective seal in place when there is no lens mounted on the camera. In addition, make sure to always point the camera downward when there is no protective seal on the camera front or no lens mounted.

## Procedures for Cleaning the Sensor

If you have dust or foreign matter on the sensor surface, follow the procedures below to wipe off.

1. Remove a contaminant by using an ionizing air gun.  
If this step does not remove the contaminant, proceed to the next step.
2. Clean the contaminant of the sensor using one drop of lens cleaner on a non-fluffy cotton bud.
3. Wipe the cotton bud gently in only one direction (either left to right or right to left). Avoid wiping back and forth with the same cotton bud in order to ensure that the contaminants are removed and not simply transferred to a new location on the sensor surface.
4. Mount a lens, set the lens at a smaller aperture (e.g. F8), and then acquire images under bright lighting conditions. Check the images on the monitor for dark spots or stripes caused by the contaminant. Repeat the steps above until there is no contaminant present.



If sensor is damaged due to electrostatic discharge or the sensor surface is scratched during cleaning, the warranty is void.

## 2 Warranty

The following are excluded from warranty coverage.

- The manufacturer is not responsible for any failure of the equipment due to service or modification by unauthorized manufacturers, agents, or technicians.
- The manufacturer is not responsible for loss or damage to the materials due to the negligence of the operator.
- If the user uses it for purposes other than the purpose of use, or if damage and failure occur due to excessive use or negligence.
- Incorrect use of power, or failure to use under the conditions of use specified in the user manual.
- Natural disasters caused by lightning, earthquake, fire, flood, etc.
- If problems occur due to replacement or modification of parts and software of the equipment without authorization.

For product-related inquiries and service, please contact your dealer or manufacturer.

The warranty period is the period specified in the warranty statement at the time of sale and applies from the time the equipment is shipped.



## 3 Compliance & Certifications

### 3.1 FCC Compliance

This equipment has been tested and found to comply with the limits for a Class A digital device, pursuant to part 15 of the FCC Rules. These limits are designed to provide reasonable protection against harmful interference when the equipment is operated in a commercial environment. This equipment generates, uses, and can radiate radio frequency energy and, if not installed and used in accordance with the instruction manual, may cause harmful interference to radio communications. Operation of this equipment in a residential area is likely to cause harmful interference in which case the user will be required to correct the interference at his own expenses.

### 3.2 CE: DoC

EMC Directive 2014/30/EU

EN 55032:2012 (Class A), EN 55024:2010

Class A

### 3.3 UL



This is the Canadian / US safety compliance mark applies to electric shock, fire, and mechanical hazards.

In accordance with UL 62368-1.

\*Among the products covered in this manual, one model, VT-3K7C-H100A-128, is UL certified.

### 3.4 KC

#### KCC Statement

Type	Description
Class A (Broadcasting Communication Device for Office Use)	This device obtained EMC registration for office use (Class A) and may be used in places other than home. Sellers and/or users need to take note of this.

## 4 Package Components

### Package Components



VT-4K7C / VT-4K14C / VT-9K7C / VT-12K5C / VT-18K3.5C Camera with M72 0.75 mount



VT-3K7C / VT-4K5C / VT-6K3.5C Camera with M42 mount

## 5 Product Specifications

### 5.1 Overview

VT series, Time Delay & Integration (TDI) line scan cameras, provides faster line rates and higher sensitivity than existing line scan cameras. Hybrid image sensor technology based on a combination of CCD and CMOS circuits allows image captures with up to  $\times 128$  higher sensitivity using the M72 mount based VT-9K7C camera. Even superior resolution and sensitivity, up to  $\times 256$  greater sensitivity can be achieved using the VT-18K3.5C camera. Its robust Camera Link interface supports transmitting image data at up to 125 kbit/s using the VT-4K7C and VT-4K14C cameras. The VT-3K7C, VT-4K5C and VT-6K3.5C cameras which are supporting the M42 mount feature up to 100 kbit/s with  $256\times$  higher sensitivity. Featured with high speed and high resolution, VT series is ideal for demanding applications such as flat panel display inspection, wafer inspection, printed circuit board inspection, and high-performance document scanning.

#### Main Features

Hybrid Line Scan

Max. 17824  $\times$  256 Pixel Resolution

Bidirectional Operations with up to 256 TDI Stages

Anti-blooming

Trigger Rescaler and Strobe Output Control

Camera Link Full Interface up to 120 kbit/s

Advanced PRNU and DSNU Correction

Area Scan Mode for Camera Alignment

#### Applications

Flat Panel Display Inspection

Printed Circuit Board Inspection

Wafer Inspection

High Performance Document Scanning

## 5.2 Specifications

Technical specifications for VT Camera Link series are as follows:

Specification		VT-4K7C-E120A-32	VT-4K7C-H120A-128
Active Image (H × V)		4096 × 32	4096 × 128
Sensor Type		Hybrid TDI Line Scan	
Pixel Size		7.0 μm × 7.0 μm	
Interface		Camera Link (Base/Medium/Full/10 Tap)	
Pixel Data Format		8 bit (2/4/8/10 Tap) / 10 bit (2/4 Tap) / 12 bit (2/4 Tap)	
TDI Stage		32	32 / 64 / 96 / 128
TDI Direction		External Control Port or Programmable	
Trigger Synchronization		Free-Run, External Trigger Signal, Camera Link CC1 Programmable Line Rate and Trigger Polarity	
Max. Line Rate		125 kHz	
Min. Line Rate		1 kHz	
Camera Link Pixel Clock		85 MHz	
Video Output		2, 4, 8 or 10 Tap	
Throughput		0.51 Gpix/s	
Gamma Correction		User Defined LUT (Look Up Table)	
Black Level		-255 ~ 255 at 8 bits	
Gain Control		Analog Gain: ×1, ×2, ×3, ×4 / Digital Gain: ×1.0 ~ ×8.0	
External Trigger		External, 3.3 V – 5.0 V	
Power	Adapter	10 ~ 30 VDC	
	Dissipation	Typ. 12.0 W	
Environmental		Ambient Operating: 0°C ~ 40°C (Housing: 10°C ~ 50°C), Storage: -40°C ~ 70°C	
Mechanical		90 mm × 90 mm × 38 mm, 500 g	
Configuration Software		Configurator	
<b>Optical Interface</b>			
Lens Mount		M72 × 0.75	
Sensor to Camera Front		10.20 mm (Optical Distance)	
Sensor Alignment			
Flatness		±25 μm	
x		±0.15 mm	
y		±0.15 mm	
z		±0.1 mm	

**Table 5.1 Specifications of M72 mount based VT CL (VT-4K7C-E120A-32 / VT-4K7C-H120A-128)**

Specification		VT-4K14C-E120A-16	VT-4K14C-H120A-64
Active Image (H × V)		4096 × 16	4096 × 64
Sensor Type		Hybrid TDI Line Scan	
Pixel Size		14.0 μm × 14.0 μm	
Interface		Camera Link (Base/Medium/Full/10 Tap)	
Pixel Data Format		8 bit (2/4/8/10 Tap) / 10 bit (2/4 Tap) / 12 bit (2/4 Tap)	
TDI Stage		16	16 / 32 / 48 / 64
TDI Direction		External Control Port or Programmable	
Trigger Synchronization		Free-Run, External Trigger Signal, Camera Link CC1 Programmable Line Rate and Trigger Polarity	
Max. Line Rate		125 kHz	
Min. Line Rate		1 kHz	
Camera Link Pixel Clock		85 MHz	
Video Output		2, 4, 8 or 10 Tap	
Throughput		0.51 Gpix/s	
Gamma Correction		User Defined LUT (Look Up Table)	
Black Level		-255 ~ 255 at 8 bits	
Gain Control		Analog Gain: ×1, ×2, ×3, ×4 / Digital Gain: ×1.0 ~ ×8.0	
External Trigger		External, 3.3 V – 5.0 V	
Power	Adapter	10 ~ 30 V DC	
	Dissipation	Typ. 12.0 W	
Environmental		Ambient Operating: 0°C ~ 40°C (Housing: 10°C ~ 50°C), Storage: -40°C ~ 70°C	
Mechanical		90 mm × 90 mm × 38 mm, 500 g	
Configuration Software		Configurator	
<b>Optical Interface</b>			
Lens Mount		M72 × 0.75	
Sensor to Camera Front		10.20 mm (Optical Distance)	
Sensor Alignment			
Flatness	±25 μm		
x	±0.15 mm		
y	±0.15 mm		
z	±0.1 mm		

**Table 5.2 Specifications of M72 mount based VT CL (VT-4K14C-E120A-16 / VT-4K14C-H120A-64)**

Specification		VT-9K7C-E80A-32	VT-9K7C-H80A-128
Active Image (H × V)		8912 × 32	8912 × 128
Sensor Type		Hybrid TDI Line Scan	
Pixel Size		7.0 μm × 7.0 μm	
Interface		Camera Link (Base/Medium/Full/10 Tap)	
Pixel Data Format		8 bit (2/4/8/10 Tap) / 10 bit (2/4 Tap) / 12 bit (2/4 Tap)	
TDI Stage		32	32 / 64 / 96 / 128
TDI Direction		External Control Port or Programmable	
Trigger Synchronization		Free-Run, External Trigger Signal, Camera Link CC1 Programmable Line Rate and Trigger Polarity	
Max. Line Rate		94 kHz	
Min. Line Rate		1 kHz	
Camera Link Pixel Clock		85 MHz	
Video Output		2, 4, 8 or 10 Tap	
Throughput		0.83 Gpix/s	
Gamma Correction		User Defined LUT (Look Up Table)	
Black Level		-255 ~ 255 at 8 bits	
Gain Control		Analog Gain: ×1, ×2, ×3, ×4 / Digital Gain: ×1.0 ~ ×8.0	
External Trigger		External, 3.3 V – 5.0 V	
Power	Adapter	10 ~ 30 V DC	
	Dissipation	Typ. 12.0 W	
Environmental		Ambient Operating: 0°C ~ 40°C (Housing: 10°C ~ 50°C), Storage: -40°C ~ 70°C	
Mechanical		90 mm × 90 mm × 38 mm, 500 g	
Configuration Software		Configurator	
<b>Optical Interface</b>			
Lens Mount		M72 × 0.75	
Sensor to Camera Front		10.20 mm (Optical Distance)	
Sensor Alignment			
Flatness	±25 μm		
x	±0.15 mm		
y	±0.15 mm		
z	±0.1 mm		

**Table 5.3 Specifications of M72 mount based VT CL (VT-9K7C-E80A-32 / VT-9K7C-H80A-128)**

Specification		VT-12K5C-E60A-64	VT-12K5C-H60A-256
Active Image (H × V)		12480 × 64	12480 × 256
Sensor Type		Hybrid TDI Line Scan	
Pixel Size		5.0 μm × 5.0 μm	
Interface		Camera Link (Base/Medium/Full/10 Tap)	
Pixel Data Format		8 bit (2/4/8/10 Tap) / 10 bit (2/4 Tap) / 12 bit (2/4 Tap)	
TDI Stage		64	64 / 128 / 192 / 256
TDI Direction		External Control Port or Programmable	
Trigger Synchronization		Free-Run, External Trigger Signal, Camera Link CC1 Programmable Line Rate and Trigger Polarity	
Max. Line Rate		67 kHz	
Min. Line Rate		1 kHz	
Camera Link Pixel Clock		85 MHz	
Video Output		2, 4, 8 or 10 Tap	
Throughput		0.83 Gpix/s	
Gamma Correction		User Defined LUT (Look Up Table)	
Black Level		-255 ~ 255 at 8 bits	
Gain Control		Analog Gain: ×1, ×2, ×3, ×4 / Digital Gain: ×1.0 ~ ×8.0	
External Trigger		External, 3.3 V – 5.0 V	
Power	Adapter	10 ~ 30 V DC	
	Dissipation	Typ. 12.0 W	
Environmental		Ambient Operating: 0°C ~ 40°C (Housing: 10°C ~ 50°C), Storage: -40°C ~ 70°C	
Mechanical		90 mm × 90 mm × 38 mm, 500 g	
Configuration Software		Configurator	
<b>Optical Interface</b>			
Lens Mount		M72 × 0.75	
Sensor to Camera Front		10.20 mm (Optical Distance)	
Sensor Alignment			
Flatness		±25 μm	
x		±0.15 mm	
y		±0.15 mm	
z		±0.1 mm	

**Table 5.4 Specifications of M72 mount based VT CL (VT-12K5C-E60A-64 / VT-12K5C-H60A-256)**

Specification		VT-18K3.5C-E40A-64	VT-18K3.5C-H40A-256
Active Image (H × V)		17824 × 64	17824 × 256
Sensor Type		Hybrid TDI Line Scan	
Pixel Size		3.5 μm × 3.5 μm	
Interface		Camera Link (Base/Medium/Full/10 Tap)	
Pixel Data Format		8 bit (2/4/8/10 Tap) / 10 bit (2/4 Tap) / 12 bit (2/4 Tap)	
TDI Stage		64	64 / 128 / 192 / 256
TDI Direction		External Control Port or Programmable	
Trigger Synchronization		Free-Run, External Trigger Signal, Camera Link CC1 Programmable Line Rate and Trigger Polarity	
Max. Line Rate		47 kHz	
Min. Line Rate		1 kHz	
Camera Link Pixel Clock		85 MHz	
Video Output		2, 4, 8 or 10 Tap	
Throughput		0.83 Gpix/s	
Gamma Correction		User Defined LUT (Look Up Table)	
Black Level		-255 ~ 255 at 8 bits	
Gain Control		Analog Gain: ×1, ×2, ×3, ×4 / Digital Gain: ×1.0 ~ ×8.0	
External Trigger		External, 3.3 V – 5.0 V	
Power	Adapter	10 ~ 30 V DC	
	Dissipation	Typ. 12.0 W	
Environmental		Ambient Operating: 0°C ~ 40°C (Housing: 10°C ~ 50°C), Storage: -40°C ~ 70°C	
Mechanical		90 mm × 90 mm × 38 mm, 500 g	
Configuration Software		Configurator	
<b>Optical Interface</b>			
Lens Mount		M72 × 0.75	
Sensor to Camera Front		10.20 mm (Optical Distance)	
Sensor Alignment			
Flatness		±25 μm	
x		±0.15 mm	
y		±0.15 mm	
z		±0.1 mm	

**Table 5.5 Specifications of M72 mount based VT CL (VT-18K3.5C-E40A-64 / VT-18K3.5C-H40A-256)**



Specification		VT-3K7C-E100A-32	VT-3K7C-H100A-128
Active Image (H × V)		3200×32	3200×128
Sensor Type		Hybrid TDI Line Scan	
Pixel Size		7.0 μm × 7.0 μm	
Interface		Camera Link (Base/Medium/Full/10 Tap)	
Pixel Data Format		8 bit (2/4/8/10 Tap) / 10 bit (2/4 Tap) / 12 bit (2/4 Tap)	
TDI Stage		32	32 / 64 / 96 / 128
TDI Direction		External Control Port or Programmable	
Trigger Synchronization		Free-Run, External Trigger Signal, Camera Link CC1 Programmable Line Rate and Trigger Polarity	
Max. Line Rate		100 kHz	
Min. Line Rate		1 kHz	
Camera Link Pixel Clock		40 / 60 / 80 / 85 MHz	
Video Output		2, 4, 8 or 10 Tap	
Throughput		0.32 Gpix/s	
Gamma Correction		User Defined LUT (Look Up Table)	
Black Level		-255 ~ 255 at 8 bits	
Gain Control		Analog Gain: ×1, ×2, ×3, ×4 / Digital Gain: ×1.0 ~ ×8.0	
External Trigger		External, 3.3 V – 5.0 V	
Power	Adapter	10 ~ 30 V DC	
	Dissipation	Typ. 3.5 W	
Environmental		Ambient Operating: 0°C ~ 50°C (Housing: 10°C ~ 50°C), Storage: -40°C ~ 70°C	
Mechanical		60 mm × 60 mm × 36 mm, 223 g	
Configuration Software		Configurator	
<b>Optical Interface</b>			
Lens Mount		M42	
Sensor to Camera Front		10.10 mm (Optical Distance)	
Sensor Alignment			
Flatness	±25 μm		
x	±0.15 mm		
y	±0.15 mm		
z	±0.1 mm		

**Table 5.6 Specifications of M42 mount based VT CL (VT-3K7C-E100A-32 / VT-3K7C-H100A-128)**

Specification		VT-4K5C-E100A-64	VT-4K5C-H100A-256
Active Image (H × V)		4640×64	4640×256
Sensor Type		Hybrid TDI Line Scan	
Pixel Size		5.0 μm × 5.0 μm	
Interface		Camera Link (Base/Medium/Full/10 Tap)	
Pixel Data Format		8 bit (2/4/8/10 Tap) / 10 bit (2/4 Tap) / 12 bit (2/4 Tap)	
TDI Stage		64	64 / 128 / 192 / 256
TDI Direction		External Control Port or Programmable	
Trigger Synchronization		Free-Run, External Trigger Signal, Camera Link CC1 Programmable Line Rate and Trigger Polarity	
Max. Line Rate		100 kHz	
Min. Line Rate		1 kHz	
Camera Link Pixel Clock		40 / 60 / 80 / 85 MHz	
Video Output		2, 4, 8 or 10 Tap	
Throughput		0.46 Gpix/s	
Gamma Correction		User Defined LUT (Look Up Table)	
Black Level		-255 ~ 255 at 8 bits	
Gain Control		Analog Gain: ×1, ×2, ×3, ×4 / Digital Gain: ×1.0 ~ ×8.0	
External Trigger		External, 3.3 V – 5.0 V	
Power	Adapter	10 ~ 30 V DC	
	Dissipation	Typ. 4.0 W	
Environmental		Ambient Operating: 0°C ~ 50°C (Housing: 10°C ~ 50°C), Storage: -40°C ~ 70°C	
Mechanical		60 mm × 60 mm × 36 mm, 223 g	
Configuration Software		Configurator	
<b>Optical Interface</b>			
Lens Mount		M42	
Sensor to Camera Front		10.10 mm (Optical Distance)	
Sensor Alignment			
Flatness		±25 μm	
x		±0.15 mm	
y		±0.15 mm	
z		±0.1 mm	

**Table 5.7 Specifications of M42 mount based VT CL (VT-3K7C-E100A-32 / VT-3K7C-H100A-128)**

Specification		VT-6K3.5C-E100A-64	VT-6K3.5C-H100A-256
Active Image (H × V)		6560×64	6560×256
Sensor Type		Hybrid TDI Line Scan	
Pixel Size		3.5 μm × 3.5 μm	
Interface		Camera Link (Base/Medium/Full/10 Tap)	
Pixel Data Format		8 bit (2/4/8/10 Tap) / 10 bit (2/4 Tap) / 12 bit (2/4 Tap)	
TDI Stage		64	64 / 128 / 192 / 256
TDI Direction		External Control Port or Programmable	
Trigger Synchronization		Free-Run, External Trigger Signal, Camera Link CC1 Programmable Line Rate and Trigger Polarity	
Max. Line Rate		100 kHz	
Min. Line Rate		1 kHz	
Camera Link Pixel Clock		40 / 60 / 80 / 85 MHz	
Video Output		2, 4, 8 or 10 Tap	
Throughput		0.66 Gpix/s	
Gamma Correction		User Defined LUT (Look Up Table)	
Black Level		-255 ~ 255 at 8 bits	
Gain Control		Analog Gain: ×1, ×2, ×3, ×4 / Digital Gain: ×1.0 ~ ×8.0	
External Trigger		External, 3.3 V – 5.0 V	
Power	Adapter	10 ~ 30 V DC	
	Dissipation	Typ. 4.5 W	
Environmental		Ambient Operating: 0°C ~ 50°C (Housing: 10°C ~ 50°C), Storage: -40°C ~ 70°C	
Mechanical		60 mm × 60 mm × 36 mm, 223 g	
Configuration Software		Configurator	
<b>Optical Interface</b>			
Lens Mount		M42	
Sensor to Camera Front		10.10 mm (Optical Distance)	
Sensor Alignment			
Flatness		±25 μm	
x		±0.15 mm	
y		±0.15 mm	
z		±0.1 mm	

**Table 5.8 Specifications of M42 mount based VT CL (VT-4K5C-E100A-64 / VT-4K5C-H100A-256)**

### 5.3 Camera Block Diagram

VT series consists of three printed circuit boards (PCB), and its block diagram is shown below.

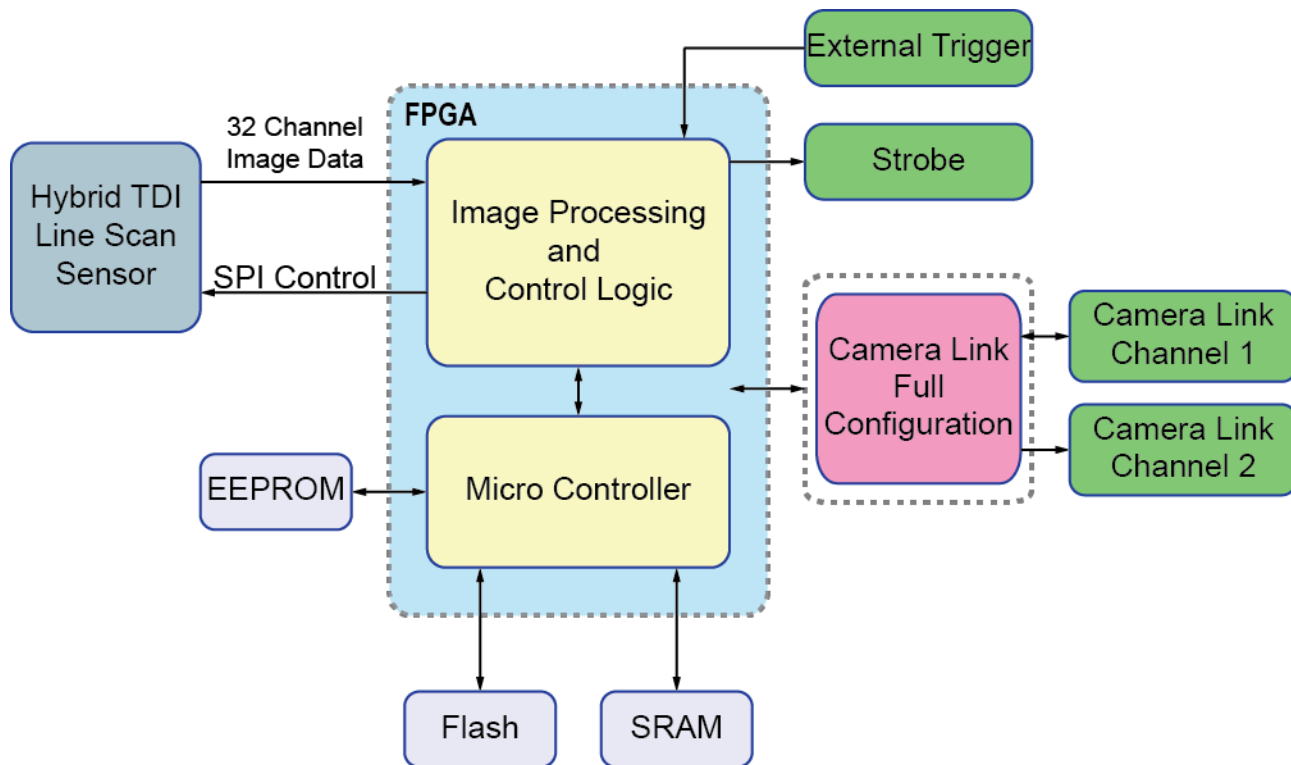
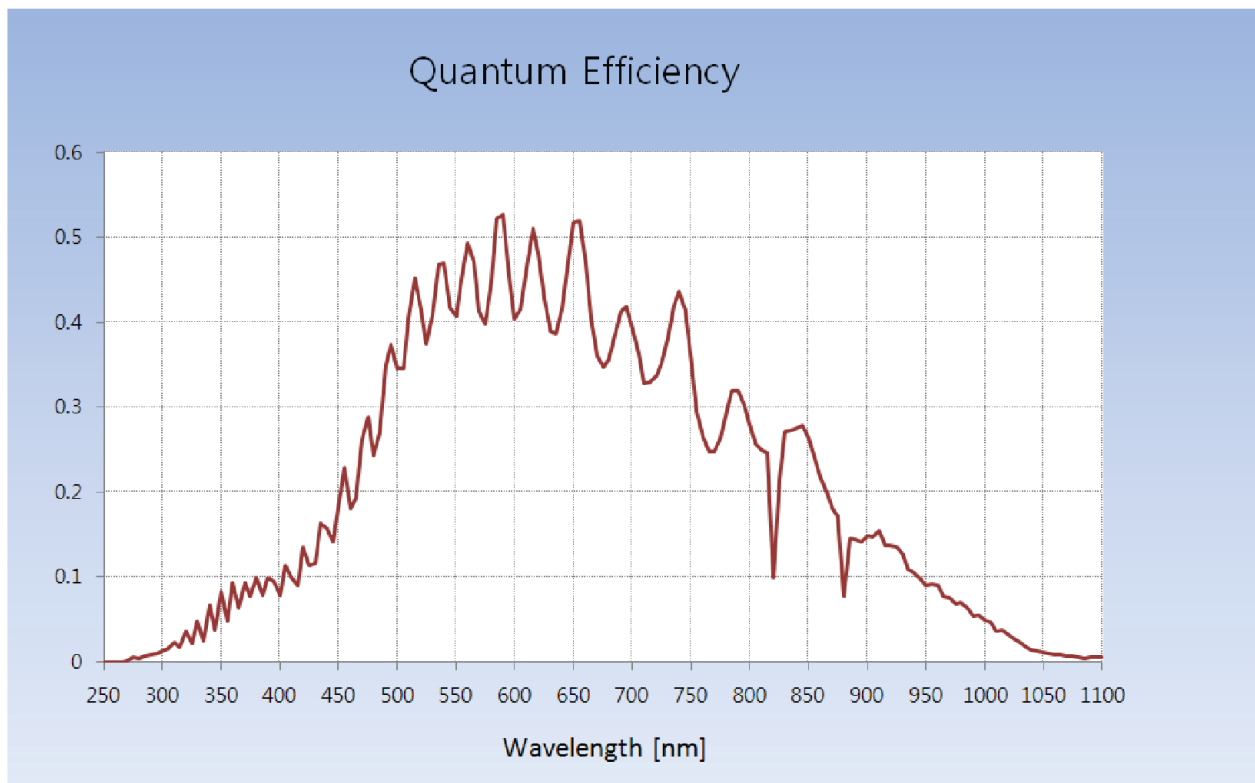


Figure 5.1 Camera Block Diagram

## 5.4 Spectral Response

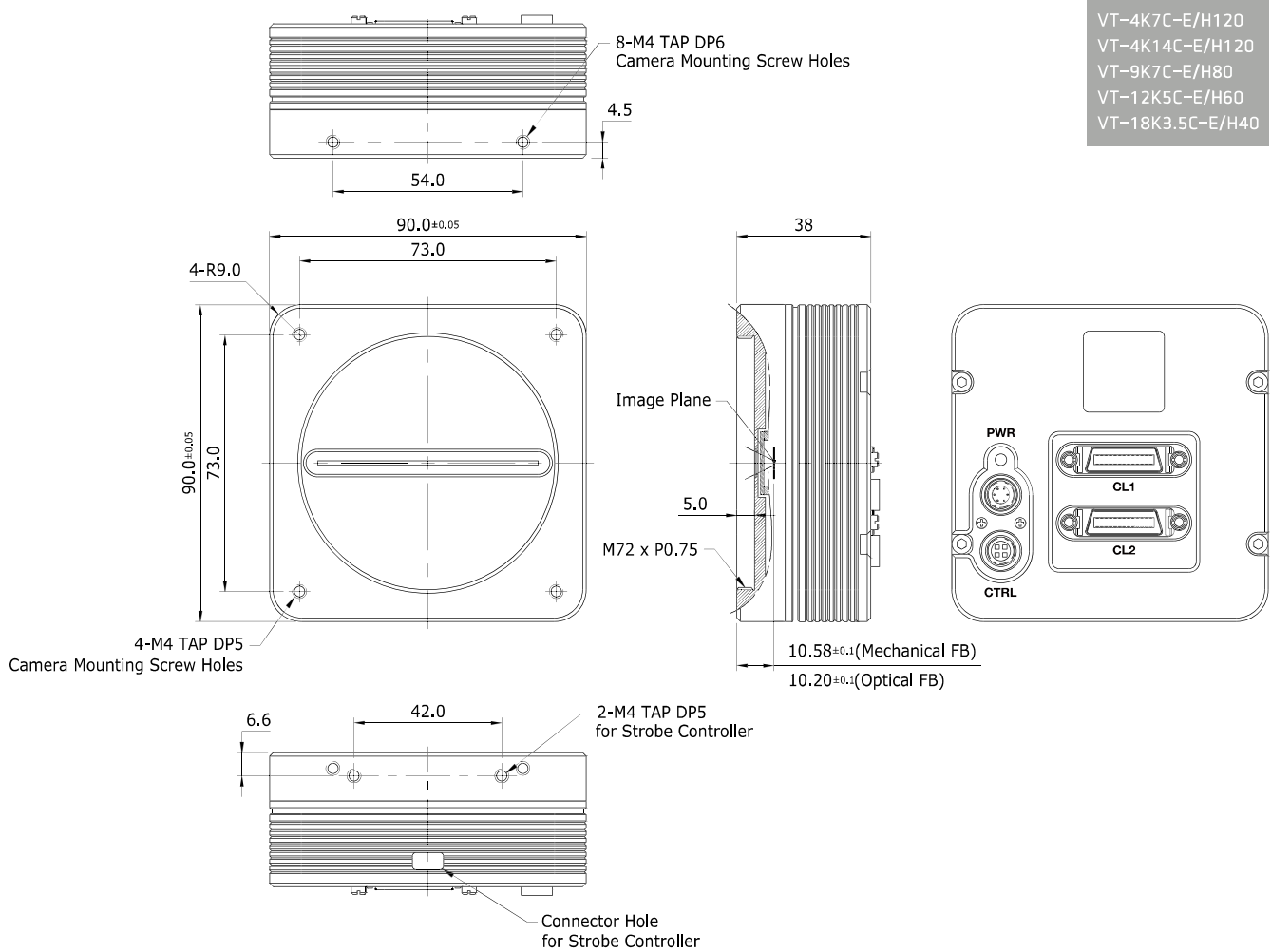
The following graph shows the spectral response for VT series.



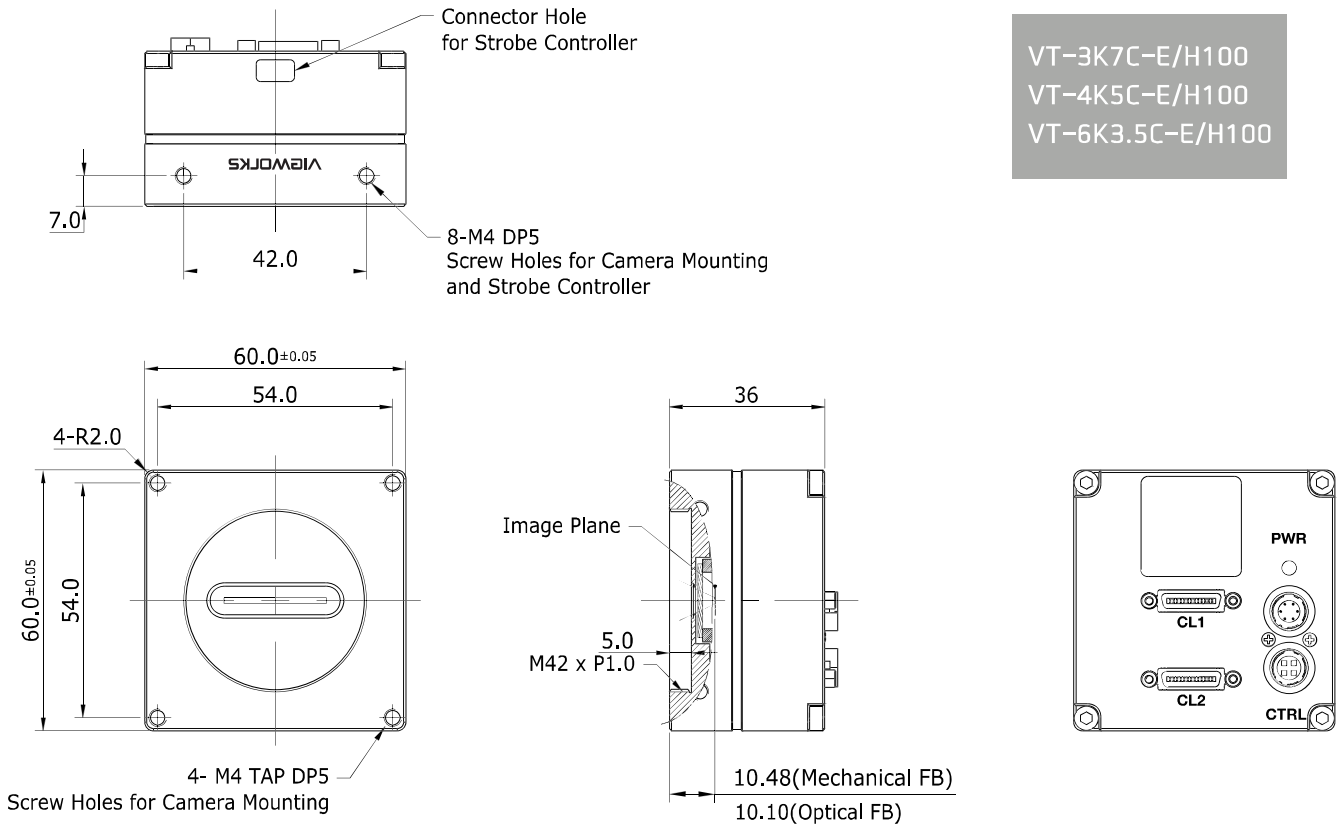
**Figure 5.2 Quantum Efficiency (Monochrome)**

## 5.5 Mechanical Specification

The camera dimensions in millimeters are shown in the following figure.



**Figure 5.3 M72 mount based VT CL Series Mechanical Dimension**



**Figure 5.4 M42 mount based VT CL Series Mechanical Dimension**

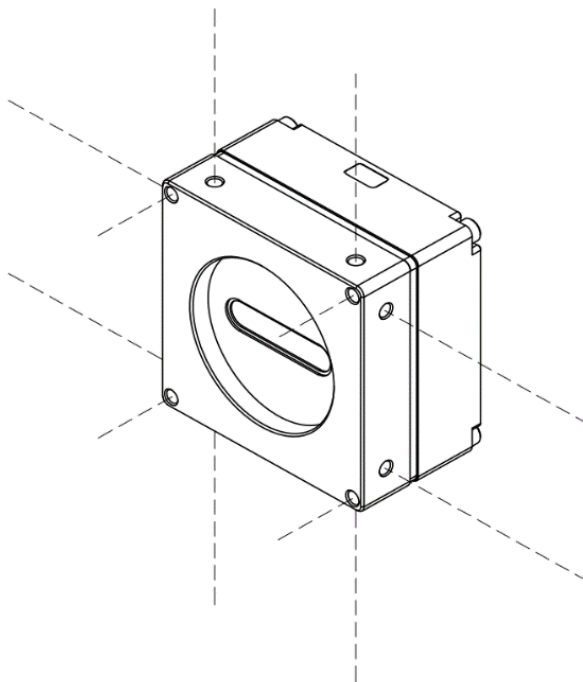
### 5.5.1 Camera Mounting and Heat Dissipation

You must mount the camera on a heat dissipation structure to maintain the temperature of the camera housing at 50°C or less. Given the low power consumption of the VT series camera, its housing temperature during operation will generally stay within the specified limits. However, overheating can occur if heat dissipation is restricted or if the camera is mounted on a severe environment. It is recommended to follow the general guidelines below when you mount the camera.

In all cases, you should monitor the temperature of the camera housing and make sure that the temperature does not exceed 40°C. You can monitor the internal temperature of the camera by using the 'gct' command. If your camera is mounted on a metal component in your system, this may provide sufficient heat dissipation.

## 5.5.2 Fixing the Camera

If needed, you can use the VT Camera Link series with screws-on mount. The parts of the camera that can be screwed in are the four parts on the front and the eight parts on the sides, indicated by the lines in the following figure:



**Figure 5-5** Locations available to tighten the set screws when mounting the product

At least one of the four sides must be secured and be sure to secure both screws on one side. For this product, the type of set screws to use are M4 and should be tightened so that the screws are inserted at least 4 mm into the camera.



## 6 Connecting the Camera

The following instructions assume that you have installed a Camera Link frame grabber in your computer including related software. For more information, refer to your Camera Link frame grabber user manual.

To connect the camera to your computer, follows the steps below.

1. Make sure that the power supply is not connected to the camera and your computer is turned off.
2. Plug one end of a Camera Link cable into the Camera Link1 connector on the camera and the other end of the Camera Link cable into the Base connector on the Camera Link frame grabber.
3. Plug one end of a Camera Link cable into the Camera Link2 connector on the camera and the other end of the Camera Link cable into the Medium/Full connector on the Camera Link frame grabber.
4. Connect the plug of the power adapter to the 6-pin power input receptacle on the camera.
5. Plug the power adapter into a working electrical outlet.
6. Verify all the cable connections are secure.

### Precautions for using Camera Link Medium/Full Configuration



VT CL cameras support Camera Link Base, Medium and Full configurations. To operate the camera in the medium or full Camera Link configuration, you must connect the camera to the Camera Link frame grabber using two Camera Link cables. At this time, you must connect both Camera Link1 (Base) and Camera Link2 (Medium/Full) connectors on the camera to their respective connectors on the Camera Link frame grabber.

### 6.1 Precaution to Center the Image Sensor

Users do not need to center the image sensor as it is adjusted as factory default settings.

When you need to adjust the center of image sensor, please contact your local dealer or factory representative for technical assistance.

### 6.2 Controlling the Camera

You can control the camera by using Configurator.

You can download the latest Configurator at <http://vision.viewworks.com>.

Please refer to your Camera Link frame grabber user manual.

## 7 Camera Interface

### 7.1 General Description

As shown in the figure below, four types of connectors and a status indicator LED are located on the back of the camera and have the functions as follows:

- |  |   |
|--|---|
| <ul style="list-style-type: none"> <li>① Status LED:</li> <li>② 26 pin MDR/SDR Connector 1 (Camera Link Base):</li> <li>③ 26 pin MDR/SDR Connector 2 (Camera Link Medium/Full):</li> <li>④ 6 pin Power Input Receptacle:</li> <li>⑤ 4 pin Control I/O Receptacle:</li> </ul> | <ul style="list-style-type: none"> <li>displays power status and operation mode.</li> <li>controls video data transmission and the camera.</li> <li>transmits video data.</li> <li>supplies power to the camera.</li> <li>provides access to the camera's I/O lines.</li> </ul> |
|--|---|

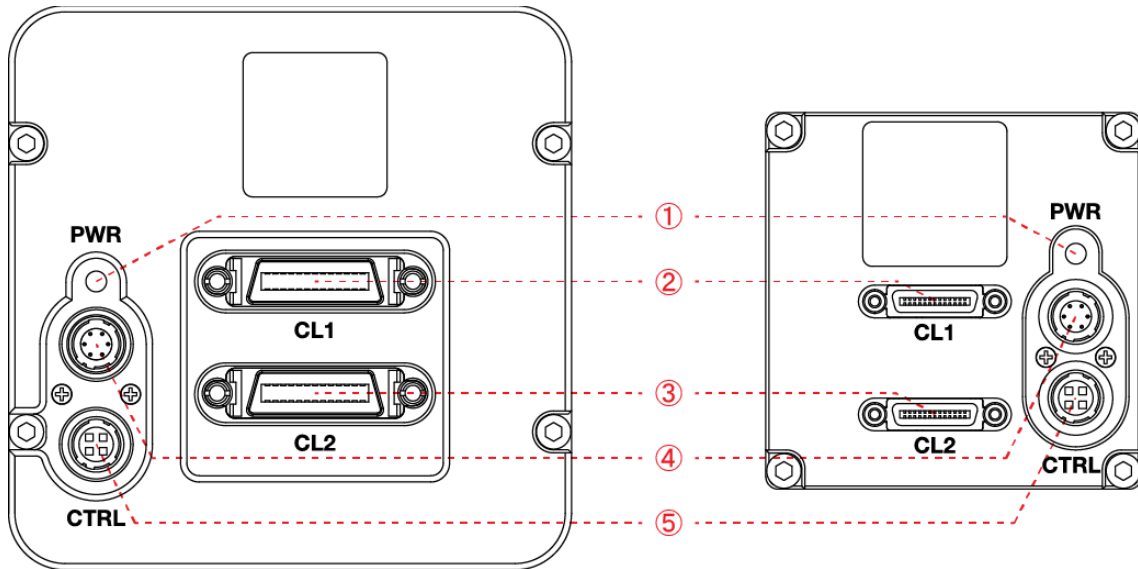


Figure 7.1 M72 mount (left) and M42 mount (right) based VT Camera Link Series Back Panel

### 7.2 Camera Link MDR/SDR Connector

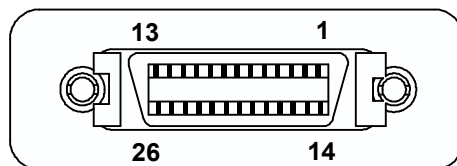


Figure 7.2 Camera Link Connector

Camera Link connectors comply with Camera Link Standard and the following list shows the pin assignments of the connector.

PAIR List	Pin	Signal Name	Type	Description
PAIR 0	1	Ground	Ground	Cable Shield
	14	Ground	Ground	Cable Shield
PAIR 1	2	-X0	LVDS - Out	Camera Link Transmitter
	15	+X0	LVDS - Out	Camera Link Transmitter
PAIR 2	3	-X1	LVDS - Out	Camera Link Transmitter
	16	+X1	LVDS - Out	Camera Link Transmitter
PAIR 3	4	-X2	LVDS - Out	Camera Link Transmitter
	17	+X2	LVDS - Out	Camera Link Transmitter
PAIR 4	5	-XCLK	LVDS - Out	Camera Link Transmitter
	18	+XCLK	LVDS - Out	Camera Link Transmitter
PAIR 5	6	-X3	LVDS - Out	Camera Link Transmitter
	19	+X3	LVDS - Out	Camera Link Transmitter
PAIR 6	7	+ SerTC	LVDS - In	Serial Data Receiver
	20	- SerTC	LVDS - In	Serial Data Receiver
PAIR 7	8	- SerTFG	LVDS - Out	Serial Data Transmitter
	21	+ SerTFG	LVDS - Out	Serial Data Transmitter
PAIR 8	9	- CC 1	LVDS - In	Software External Trigger
	22	+ CC 1	LVDS - In	Software External Trigger
PAIR 9	10	N/C	N/C	N/C
	23	N/C	N/C	N/C
PAIR 10	11	N/C	N/C	N/C
	24	N/C	N/C	N/C
PAIR 11	12	N/C	N/C	N/C
	25	N/C	N/C	N/C
PAIR 12	13	Ground	Ground	Cable Shield
	26	Ground	Ground	Cable Shield

**Table 7.1 Pin Assignments for Camera Link Connector 1**

PAIR List	Pin	Signal Name	Type	Description
PAIR 0	1	Ground	Ground	Cable Shield
	14	Ground	Ground	Cable Shield
PAIR 1	2	-Y0	LVDS - Out	Camera Link Transmitter
	15	+Y0	LVDS - Out	Camera Link Transmitter
PAIR 2	3	-Y1	LVDS - Out	Camera Link Transmitter
	16	+Y1	LVDS - Out	Camera Link Transmitter
PAIR 3	4	-Y2	LVDS - Out	Camera Link Transmitter
	17	+Y2	LVDS - Out	Camera Link Transmitter
PAIR 4	5	-YCLK	LVDS - Out	Camera Link Transmitter
	18	+YCLK	LVDS - Out	Camera Link Clock Tx
PAIR 5	6	-Y3	LVDS - Out	Camera Link Channel Tx
	19	+Y3	LVDS - Out	Camera Link Channel Tx
PAIR 6	7	-	Not Used	Connected with 100 ohm
	20	-	Not Used	
PAIR 7	8	-Z0	LVDS - Out	Camera Link Transmitter
	21	+Z0	LVDS - Out	Camera Link Transmitter
PAIR 8	9	-Z1	LVDS - Out	Camera Link Transmitter
	22	+Z1	LVDS - Out	Camera Link Transmitter
PAIR 9	10	-Z2	LVDS - Out	Camera Link Transmitter
	23	+Z2	LVDS - Out	Camera Link Transmitter
PAIR 10	11	-ZCLK	LVDS - Out	Camera Link Transmitter
	24	+ZCLK	LVDS - Out	Camera Link Clock Tx
PAIR 11	12	-Z3	LVDS - Out	Camera Link Channel Tx
	25	+Z3	LVDS - Out	Camera Link Channel Tx
PAIR 12	13	Ground	Ground	Cable Shield
	26	Ground	Ground	Cable Shield

Table 7.2 Pin Assignments for Camera Link Connector 2

Model	Mount Type	Camera Link Connector Type
VT-3K7C-E100A-32	M42 mount	SDR
VT-3K7C-H100A-128	M42 mount	SDR
VT-4K5C-E100A-64	M42 mount	SDR
VT-4K5C-H100A-256	M42 mount	SDR
VT-6K3.5C-E100A-64	M42 mount	SDR
VT-6K3.5C-H100A-256	M42 mount	SDR
VT-4K7C-E120A-32	M72 mount	MDR
VT-4K7C-H120A-128	M72 mount	MDR
VT-4K14C-E120A-16	M72 mount	MDR
VT-4K14C-H120A-64	M72 mount	MDR
VT-9K7C-E80A-32	M72 mount	MDR
VT-9K7C-H80A-128	M72 mount	MDR
VT-12K5C-E60A-64	M72 mount	MDR
VT-12K5C-H60A-256	M72 mount	MDR
VT-18K3.5C-E40A-64	M72 mount	MDR
VT-18K3.5C-H40A-256	M72 mount	MDR

**Table 7.3 Camera Link Connector Type for each Camera Model**

Model	Tap Mode	CL Configuration	CL1 Connector	CL2 Connector
VT Camera Link Series	2 Tap	BASE	O	X
	4 Tap	MEDIUM	O	O
	8 Tap	FULL	O	O
	10 Tap	FULL	O	O

**Table 7.4 Connector Arrangement for the Camera Link Output Modes**



When you connect a frame grabber to Camera Link connectors on the camera using Camera Link cables, make sure you connect to the correct Camera Link connectors. Incorrect connection of CL1 connector and CL2 connector may cause malfunction of the camera or communication problems between your computer and the camera.

### 7.3 Power Input Receptacle

The power input receptacle is a Hirose 6 pin connector (part # HR10A-7R-6PB). The pin assignments and configurations are as follows.

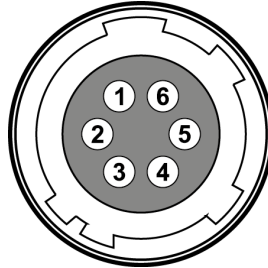


Figure 7.3 Pin Assignments for Power Input Receptacle

Pin Number	Signal	Type	Description
1, 2, 3	DC Power +	Input	DC Power Input
4, 5, 6	DC Ground -	Input	DC Ground

Table 7.5 Pin Configurations for Power Input Receptacle



A recommended mating connector for the Hirose 6-pin connector is the Hirose 6-pin plug (part # HR10A-7P-6S) or the equivalent connectors.

It is recommended that you use the power adapter, which has at least 3 A current output at 10 – 30 V DC voltage output (You need to purchase a power adapter separately. When using a Power Supply device, use a device below PS2 certified as UL 62368-1.).

#### Precaution for Power Input



Make sure the power is turned off before connecting the power cord to the camera. Otherwise, damage to the camera may result.

If the voltage applied to the camera is greater than specified in the specifications, damage to the camera may result.

## 7.4 Control I/O Receptacle

The control I/O receptacle is a Hirose 4-pin connector (part # HR10A-7R-4S) and consists of an external trigger signal input and strobe output ports. The pin assignments and configurations are as follows.

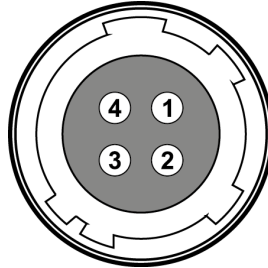


Figure 7.4 Pin Assignments for Control I/O Receptacle

Pin Number	Signal	Type	Description
1	Trigger Input	Input	3.3 V ~ 5.0 V TTL input
2	Scan Direction Input	Input	3.3 V ~ 5.0 V TTL input
3	DC Ground	-	DC Ground
4	Strobe Out	Output	3.3 V TTL Output Output resistance: 47 $\Omega$

Table 7.6 Pin Configurations for Control I/O Receptacle



A recommended mating connector for the Hirose 4-pin connector is the Hirose 4-pin plug (part # HR10A-7P-4P) or the equivalent connectors.

## 7.5 Trigger / Direction Input Circuit

The following figure shows trigger signal input and TDI direction input circuit of the 4 pin connector. Transmitted trigger signal and TDI direction signal is applied to the internal circuit through a CMOS buffer with a good noise margin. The minimum trigger width that can be recognized by the camera is 1  $\mu$ s. If transmitted trigger signal is less than 1  $\mu$ s, the camera will ignore the trigger signal. An external trigger and TDI direction circuit example is shown below.

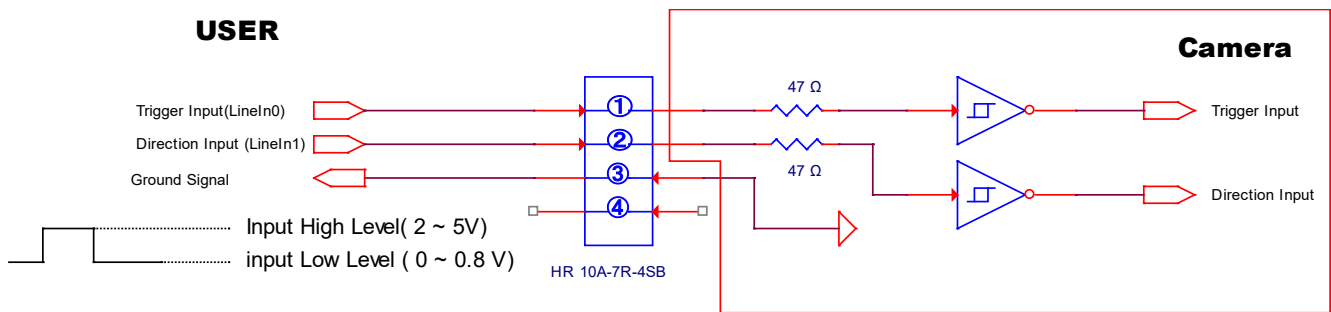


Figure 7.5 Trigger / Direction Input Schematic

## 7.6 Strobe Output Circuit

The strobe output signal comes out through a 3.3 V output level of Line Driver IC. A pulse width of the signal is synchronized with a Line Start trigger (shutter) signal of the camera (refer to [9.13 Strobe Mode](#)).

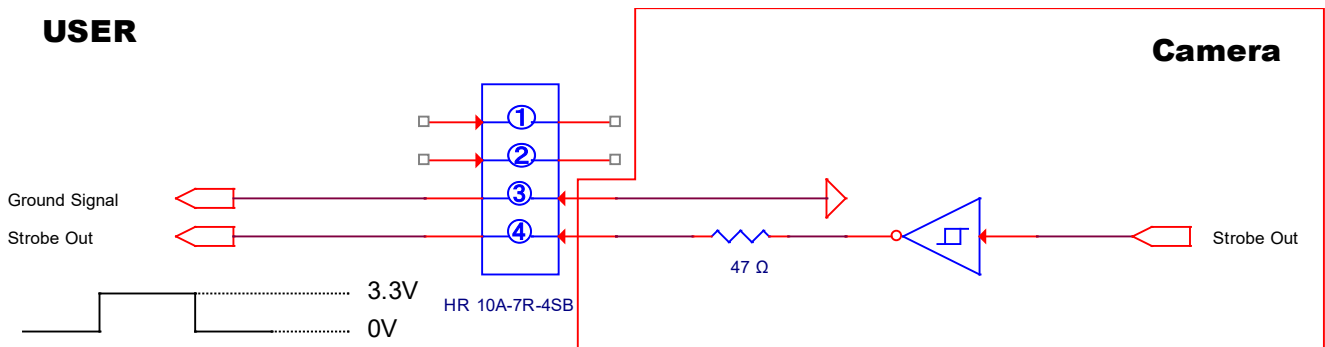


Figure 7.6 Strobe Output Schematic



## 8 Acquisition Control

This chapter provides detailed information about the following elements involved with the image acquisition.

Line Start Trigger – Trigger Mode

Line Rate Control

### 8.1 Line Start Trigger

The Line Start trigger is used to begin line acquisition. Line Start trigger signals can be generated within the camera or may be applied externally by setting the **Source** parameter to **CC1** or **External**. If a line start trigger signal is applied to the camera, the camera will begin to acquire images.

#### 8.1.1 Trigger Mode

The main parameter associated with the line start trigger is the **Trigger Mode** parameter. The **Trigger Mode** parameter for the line start trigger has two available settings: **OFF** and **ON**.

##### 8.1.1.1 Trigger Mode = OFF

When the **Trigger Mode** parameter is set to **OFF**, the camera will generate all required line start trigger signals internally, and you do not need to apply line start trigger signals to the camera.

If the **Trigger Mode** parameter is set to **OFF**, the camera will automatically begin generating line start signals.



#### Free Run

When you set the **Trigger Mode** parameter to **OFF**, the camera will generate all required trigger signals internally. When the camera is set this way, it will constantly acquire images without any need for triggering by the user. This use case is commonly known as “free run”.

The rate at which the line start trigger signals are generated may be determined by the camera's **Line Rate** parameter.

If the parameter is set to a value less than the maximum allowed line rate with the current camera settings, the camera will generate line start trigger signals at the rate specified by the parameter setting.

If the parameter is set to a value greater than the maximum allowed line rate with the current camera settings, the camera will generate line start trigger signals at the maximum allowed line rate.

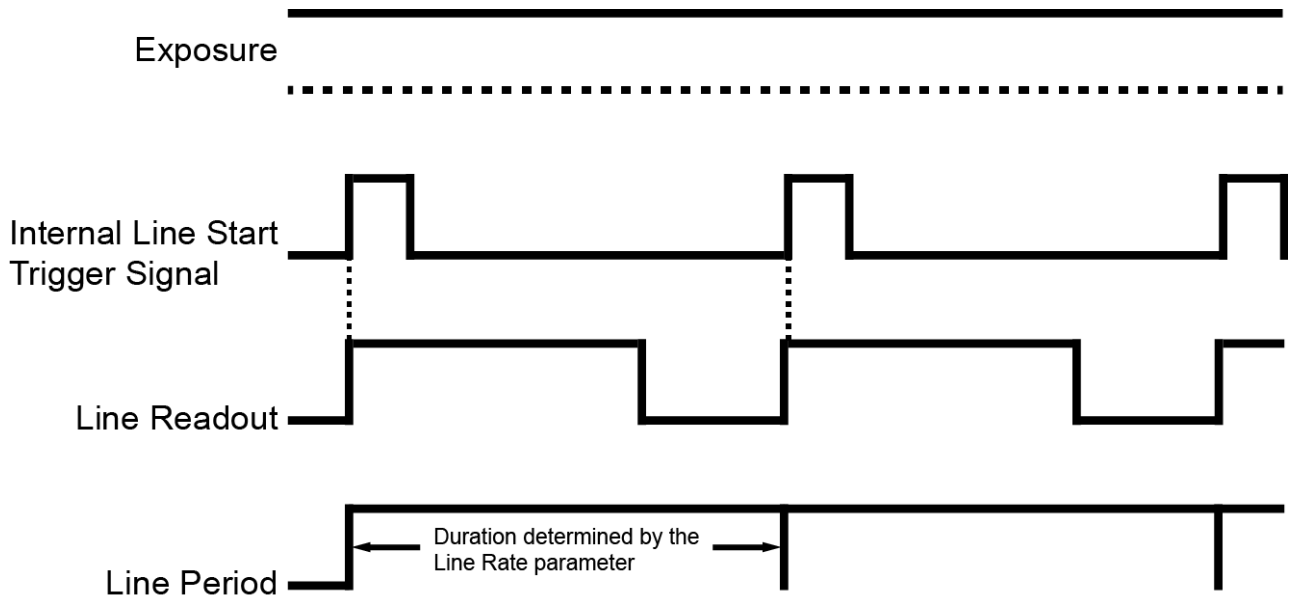


Figure 8.1 Trigger Mode = OFF

### 8.1.1.2 Trigger Mode = ON

When the **Trigger Mode** parameter is set to **ON**, you must apply a line start trigger signal to the camera each time you want to begin an image acquisition. The **Source** parameter specifies the source signal that will act as the line start trigger signal.

The available settings for the **Source** parameter are:

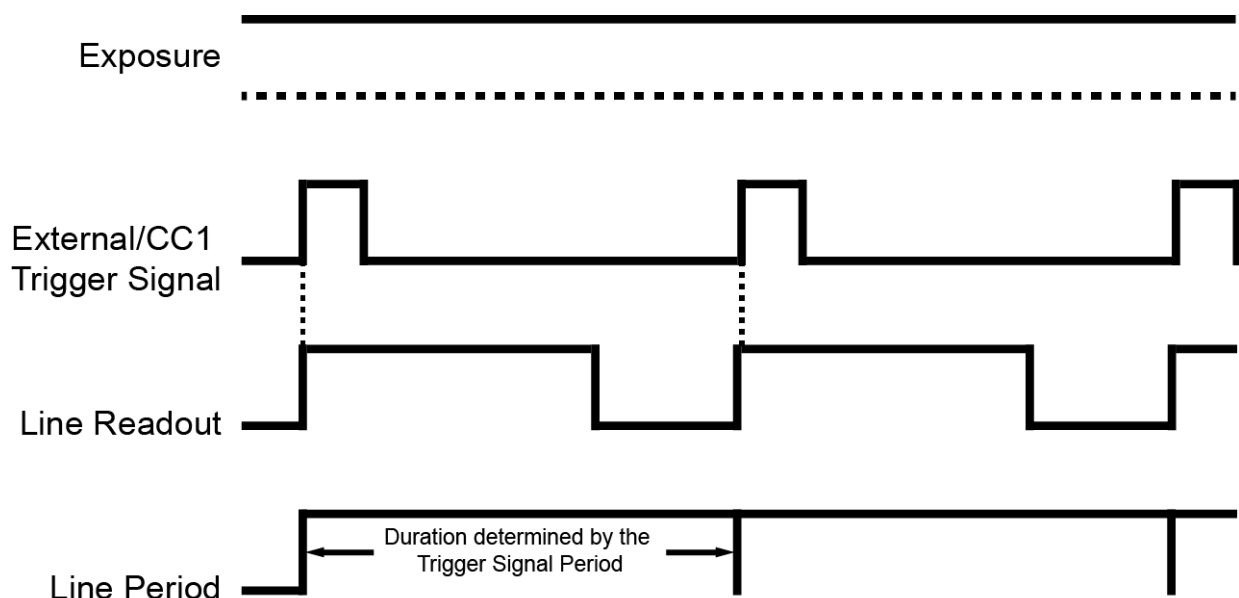
- External:** You can apply a line start trigger signal to the camera by injecting an externally generated electrical signal (commonly referred to as a hardware or external trigger signal) into the Control I/O receptacle on the camera. Refer to [7.5 Trigger / Direction Input Circuit](#) for more information.
- CC1:** You can apply a line start trigger signal via CC1 port of the Camera Link frame grabber. For more information, refer to your Camera Link frame grabber user manual.

After setting the **Source** parameter, you must also set the **Activation** parameter.

The available settings for the Activation parameter are:

- Rising:** Specifies that a rising edge of the electrical signal will act as the line start trigger.
- Falling:** Specifies that a falling edge of the electrical signal will act as the line start trigger.
- Both:** Specifies that both rising and falling edges of the electrical signal will act as the line start trigger.

When the **Trigger Mode** parameter is set to **ON**, the camera's line rate can be controlled by manipulating the external trigger signal. At this point, it is important that you do not attempt to trigger images at a rate that is greater than the maximum allowed.



**Figure 8.2 Trigger Mode = ON**

## 8.1.2 Using an External/CC1 Trigger Signal

If the **Trigger Mode** parameter is set to **ON** and the **Source** parameter is set to **External** or **CC1**, you must apply an external or CC1 trigger signal to the camera to begin image acquisition.

To apply trigger signals via CC1 port of the Camera Link frame grabber, you must set the **Source** parameter to **CC1**. At that point, each time a proper CC1 trigger signal is applied to the camera by using the APIs provided by a Camera Link frame grabber manufacturer, the line start trigger signal will be applied to the camera.

For more information, refer to your Camera Link frame grabber user manual.

To apply trigger signals via hardware (external), you must set the **Source** parameter to **External**. At that point, each time a proper electrical signal is applied to the camera, an occurrence of the line start trigger signal will be recognized by the camera.

A rising edge and/or a falling edge of the external or CC1 signal can be used to trigger image acquisition.

The **Activation** parameter is used to select rising edge and/or falling edge triggering.

When the camera is operating under control of an external or CC1 signal, the period of trigger signal will determine the rate at which the camera is acquiring images:

$$\text{Line Rate (Hz)} = \frac{1}{\text{External/CC1 signal period in seconds}}$$

For example, if you are operating a camera with an external trigger signal period of 20  $\mu\text{s}$  (0.00002 s):

So in this case, the line rate is 50 kHz.

### 8.1.3 Rescaler Mode

In the **Rescaler Mode**, you can modulate the period of the external trigger signal as desired. For example, if you supply the external trigger signal into the camera's I/O receptacle using the conveyor's encoder, the number of output pulses per revolution of the encoder is fixed. In this situation, you can modulate the period of the trigger signal received from the camera in the following manner to match the pitch of the image in vertical direction.

$$\text{Line Rate (Hz)} = \text{External Trigger Line Rate} \times \text{Rescale Rate}$$

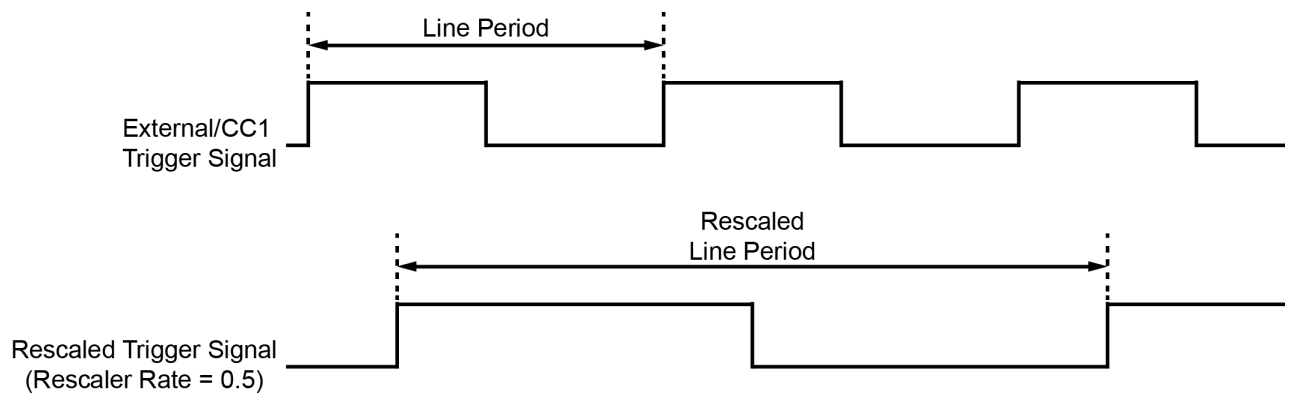


Figure 8.3 Rescaler Rate = 0.5

The commands related to the Rescaler Mode are as follows.

Configurator Parameters	Command	Value	Description
Rescaler Mode	srm 0	Off	Disables Rescaler Mode.
	srm 1	On	Enables Rescaler Mode.
Rescaler Rate	srr f	0.010000 ~ 100.000000	Set the trigger rescaler rate for converting trigger signals. f: Float, 0.010000 ~ 100.000000
Rescaler Filter	srf 0	16	Set the rescaler filter factor to decrease the jitter of the external trigger signals.
	srf 1	32	
	srf 2	64	
	srf 3	128	
	srf 4	256	
	srf 5	512	

Table 8.1 Commands related to Rescaler Mode

## 8.1.4 Trigger Statistics

The Trigger Statistics feature allows you to determine the trigger signals applied to the camera and then converted by the Trigger Rescaler.

The table below shows the parameters for the Trigger Statistics provided in the Configurator.

Configurator Parameters		Value	Description
Trigger Statistics	InputTriggerRate	-	Displays the rate at which the input trigger signals are applied to the camera in Hz.
	InputTriggerRateHighest	-	Displays the highest rate at which the input trigger signals are applied to the camera in Hz.
	InputTriggerJitter	-	Displays the jitter of the input trigger signals in %.
	InputTriggerDuration	-	Displays the pulse duration of the input trigger signals in $\mu s$ .
	RescaledTriggerRate	-	Displays the rate of the trigger signals converted by the Trigger Rescaler in Hz.
	RescaledTrigger Jitter	-	Displays the jitter of the input trigger signals converted by the Trigger Rescaler in %.

**Table 8.2 Trigger Statistics Parameters**

## 8.2 Maximum Allowed Line Rate

In general, the maximum allowed acquisition line rate on the camera may be limited by the following factors:  
Camera Link Tap Configuration (Tap Mode) Settings.

When the camera is set for a Tap Mode that uses more taps, it will take less time to transfer acquired images from the camera to the Camera Link frame grabber in your computer. For example, if the camera is set to 8 Tap (Camera Link Full Configuration), it can typically transfer data out of the camera two times faster than when the camera is set to 4 Tap (Camera Link Medium).

The maximum allowed line rates of the M72 mount based VT CL camera models are as follows:

Tap Mode	VT-4K7C / VT-4K14C	VT-9K7C	VT-12K5C	VT-18K3.5C
2 Tap	41.3 kHz	19.0 kHz	13.5 kHz	9.5 kHz
4 Tap	82.1 kHz	38.0 kHz	27.1 kHz	19.0 kHz
8 Tap	125.0 kHz	75.7 kHz	54.2 kHz	38.0 kHz
10 Tap	125.0 kHz	94.5 kHz	67.6 kHz	47.4 kHz

When the camera is set for 4 Tap Mode (CL Medium), 8 Tap Mode (CL Full) or 10 Tap Mode (CL Full), you must connect the camera to the Camera Link frame grabber using two Camera Link cables.

**Table 8.3 Maximum Allowed Line Rates of the M72 Mount based VT CL Camera Models**

The maximum allowed line rates of the M42 mount based VT CL camera models with a pixel clock of 85 MHz are as follows:

Tap Mode	VT-3K7C	VT-4K5C	VT-6K3.5C
2 Tap	52.8 kHz	36.5 kHz	25.8 kHz
4 Tap	100.0 kHz	72.7 kHz	51.5 kHz
8 Tap	100.0 kHz	100.0 kHz	100.0 kHz
10 Tap	100.0 kHz	100.0 kHz	100.0 kHz

When the camera is set for 4 Tap Mode (CL Medium), 8 Tap Mode (CL Full) or 10 Tap Mode (CL Full), you must connect the camera to the Camera Link frame grabber using two Camera Link cables.

**Table 8.4 Maximum Allowed Line Rate of the M42 Mount based VT CL Camera Models**

## 9 Camera Features

### 9.1 Operation Mode

The VT Camera Link cameras have two different operation modes: **Area** and **TDI** (Time Delay and Integration).

If the **Operation Mode** parameter is set to **Area**, the camera will operate as an area scan camera using two dimensional array of pixels. This mode is useful for aligning the camera to your target object.

If the **Operation Mode** parameter is set to **TDI**, the camera will operate as a high sensitivity line scan camera and provide up to  $\times 256$  higher sensitivity than existing line scan cameras.

The commands related to the Operation Mode are as follows.

Configurator Parameter	Command	Value	Description
Operation Mode	som 0	TDI	Operates the camera in the TDI mode.
	som 1	Area	Operates the camera in the Area mode.

**Table 9.1** Commands related to Operation Mode



## 9.2 TDI Stages

In the **TDI** mode, the **TDI Stages** parameter is used to determine the number of integration stages used by the camera. For example, if the **TDI Stages** parameter is set to **256**, the camera will acquire images with  $\times 256$  higher sensitivity.

In the **Area** mode, the **TDI Stages** parameter is used to determine the height of the image sensor. For example, if the **Operation Mode** parameter is set to **Area** and the **TDI Stages** parameter is set to **256** on the VT-18K3.5C-H40A-256 camera, the camera will acquire  $17824 \times 256$  area images.

The commands related to the TDI Stages are as follows.

Configurator Parameter	Command	Value	Description
TDI Stages	std 1	16	Sets the number of TDI Stages to 16.
	std 2	32	Sets the number of TDI Stages to 32.
	std 3	48	Sets the number of TDI Stages to 48.
	std 4	64	Sets the number of TDI Stages to 64.

**Table 9.2 Commands related to TDI Stages (VT-4K14C)**



VT-4K14C-H120 shows 32, 64, 96, 128 values to choose in the TDI Stages described the table above. However, each of those performs 16, 32, 48, 64 stages actually if chosen.

Configurator Parameter	Command	Value	Description
TDI Stages	std 1	32	Sets the number of TDI Stages to 32.
	std 2	64	Sets the number of TDI Stages to 64.
	std 3	96	Sets the number of TDI Stages to 96.
	std 4	128	Sets the number of TDI Stages to 128.

**Table 9.3 Commands related to TDI Stages (VT-3K7C/VT-4K7C/VT-9K7C)**

Configurator Parameter	Command	Value	Description
TDI Stages	std 1	64	Sets the number of TDI Stages to 64.
	std 2	128	Sets the number of TDI Stages to 128.
	std 3	192	Sets the number of TDI Stages to 192.
	std 4	256	Sets the number of TDI Stages to 256.

**Table 9.4 Commands related to TDI Stages (VT-4K5C/VT-6K3.5C/VT-12K5C/VT-18K3.5C)**

The number of available TDI Stages for each camera model is as follows.

Camera Model	Available TDI Stage Values
VT-3K7C-E100A-32	32
VT-3K7C-H100A-128	32 / 64 / 96 / 128
VT-4K5C-E100A-64	64
VT-4K5C-H100A-256	64 / 128 / 192 / 256
VT-4K7C-E120A-32	32
VT-4K7C-H120A-128	32 / 64 / 96 / 128
VT-4K14C-E120A-16	16
VT-4K14C-H120A-64	64/128/192/256
VT-6K3.5C-E100A-64	64
VT-6K3.5C-H100A-256	64 / 128 / 192 / 256
VT-9K7C-E80A-32	32
VT-9K7C-H80A-128	32 / 64 / 96 / 128
VT-12K5C-E60A-64	64
VT-12K5C-H60A-256	64 / 128 / 192 / 256
VT-18K3.5C-E40A-64	64
VT-18K3.5C-H40A-256	64 / 128 / 192 / 256

**Table 9.5 Available TDI Stage Values for each Camera Model**



VT-4K14C-H120 shows 32, 64, 96, 128 values to choose in the TDI Stages described the table above. However, each of those performs 16, 32, 48, 64 stages actually if chosen.

### 9.3 Direction

In the **TDI** mode, the **Direction** parameter is used to select the image sensor’s scan direction. You need to set the **Direction** parameter to **Forward** if the object being imaged will pass the bottom of the camera, and then pass the top of the camera. On the contrary, you need to set the **Direction** parameter to **Reverse** if the object being imaged will pass the top of the camera, and then pass the bottom of the camera.

When you set the **Direction** parameter to **Line 1**, you can also select the scan direction by injecting an externally generated electrical signal (Low = Forward, High = Reverse) into the pin 2 of the Control I/O receptacle on the camera.

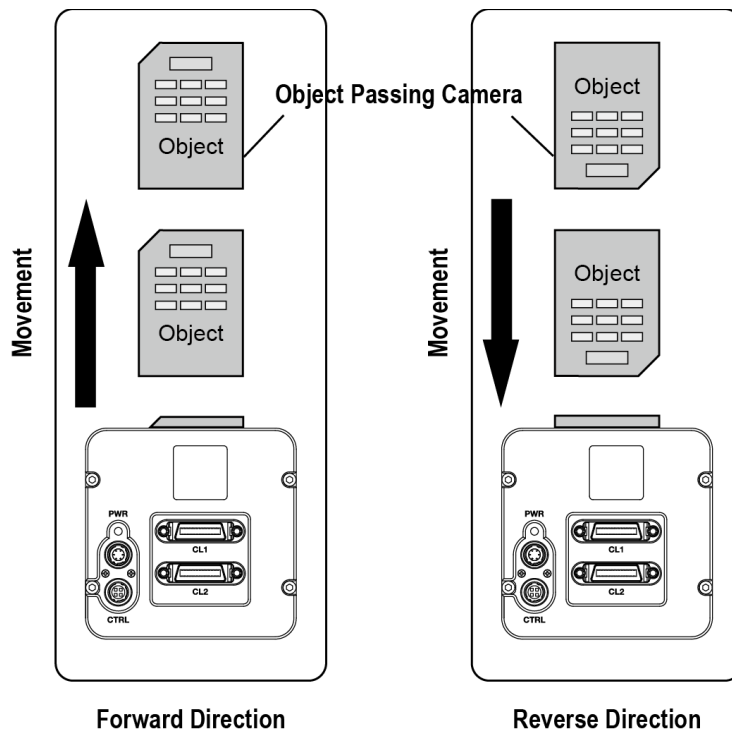


Figure 9.1 Direction

Configurator Parameter	Command	Value	Description
Direction	ssd 0	Forward	Scan images in the forward direction.
	ssd 1	Reverse	Scan images in the reverse direction.
	ssd 2	Line 1	Selects the scan direction using an external signal.

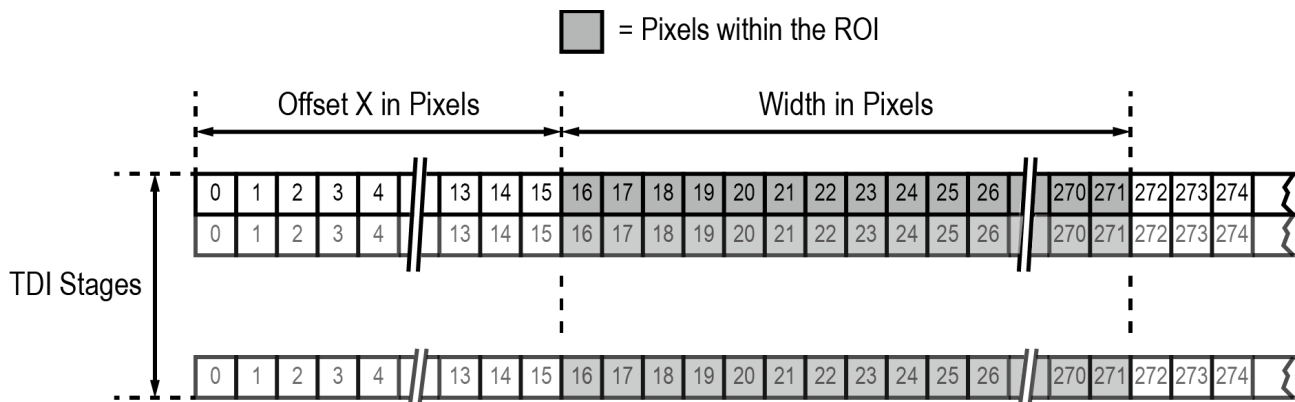
Table 9.6 Commands related to Direction

When you set the **Direction** parameter to **Reverse** in the **Area** mode, you can acquire vertically flipped images.

## 9.4 Region of Interest

The Region of Interest (ROI) feature allows you to specify a portion of the sensor lines. During operation, only the pixel information from the specified portion of the lines are read out of the sensor and transmitted from the camera to the frame grabber.

The ROI is referenced to the left end of the sensor array. The location and size of the ROI is defined by declaring the **Offset X** and **Width** settings. For example, suppose that you set the Offset X parameter to 16 and the Width parameter to 256 as shown in the figure below. With these settings, the camera will read out and transmit pixel values for pixels 16 through 271.



**Figure 9.2 Region of Interest**

### 9.4.1 Setting the ROI

By default, the ROI is set to use the full resolution of the camera's image sensor. You can change the size and location of the ROI by changing the Offset X and Width parameter values.

When you are setting the camera's region of interest, you must consider the following guidelines:

The sum of the Offset X and Width setting values must not exceed the width of the camera's image sensor. For example, on the VT-12K5C camera, the sum of the Offset X and Width setting values must not exceed 12480.

The Offset X setting value can be set to 0 and can be increased in increments of 16. The Width setting values must be a minimum of 256 and can be set to a multiple of 16.



Your Camera Link frame grabber may place additional restrictions on how the ROI location and size must be set. Refer to your Camera Link frame grabber user manual for more information.

The maximum allowed line rates of the M72 mount based VT CL camera models depending on the ROI settings are as follows.

Width	VT-4K7C / VT-4K14C	VT-9K7C	VT-12K5C	VT-18K3.5C
4096	125.0 kHz	125.0 kHz	100.0 kHz	80.0 kHz
6000	-	112.1 kHz	100.0 kHz	80.0 kHz
8192	-	82.3 kHz	82.3 kHz	80.0 kHz
8912	-	75.7 kHz	75.7 kHz	75.7 kHz
12000	-	-	56.3 kHz	56.3 kHz
12480	-	-	54.2 kHz	54.2 kHz
16384	-	-	-	41.3 kHz
17824	-	-	-	38.0 kHz

**Table 9.7 Maximum Allowed Line Rates depending on ROI Settings (M72 Mount - 8 Tap Mode @ 85 MHz)**

The maximum allowed line rates of the M42 mount based VT CL camera models depending on the ROI settings are as follows.

Width	VT-3K7C	VT-4K5C	VT-6K3.5C
1024	100.0 kHz	100.0 kHz	100.0 kHz
2048	82.3 kHz	82.3 kHz	82.3 kHz
3200	52.8 kHz	52.8 kHz	52.8 kHz
4096	-	41.3 kHz	41.3 kHz
4640	-	36.5 kHz	36.5 kHz
6560	-	-	25.8 kHz

**Table 9.8 Maximum Allowed Line Rates depending on ROI Settings (M42 Mount - 2 Tap Mode @ 85 MHz)**



To acquire images at the maximum allowed line rate, you need to set the camera's Tap Mode to 10 Tap (Camera Link Full Configuration). In this case, you must connect the camera to the Camera Link frame grabber using two Camera Link cables.

## 9.5 Binning

The binning feature has the effects of increasing the scan speed and decreasing resolution by summing the values of the adjacent pixels and integrating them. This feature is particularly useful when you need to acquire line images with lower resolution. With the Binning feature, you can acquire lower resolution images without having to change the optics or lighting conditions.

### Horizontal Binning

If the Binning Horizontal parameter is set to  $\times 2$ , the sensitivity of the image sensor will be increased and the resolution of the image sensor will be decreased.

### Vertical Binning

If the Binning Vertical parameter is set to  $\times 2$ , the camera can achieve faster scan speed and the resolution of the image sensor will be decreased.

The commands related to the Binning feature are as follows.

Configurator Parameters	Command	Value	Description
Binning H	sbh 1	$\times 1$	Disables the Horizontal Binning.
	sbh 2	$\times 2$	Combines two adjacent pixels in horizontal direction.
Binning V	sbv 1	$\times 1$	Disables the Vertical Binning.
	sbv 2	$\times 2$	Combines two adjacent pixels in vertical direction.

**Table 9.9 Commands related to Binning**



The Binning feature is only available on the VT-3K7C, VT-4K5C, VT-4K7C, VT-6K3.5C, VT-9K7C, VT-12K5C and VT-18K3.5C cameras.

## 9.6 Data Bit

The camera processes image data in the unit of 12 bit internally. You can determine the format of these image data transferred from the camera by using the **Data Bit** parameter.

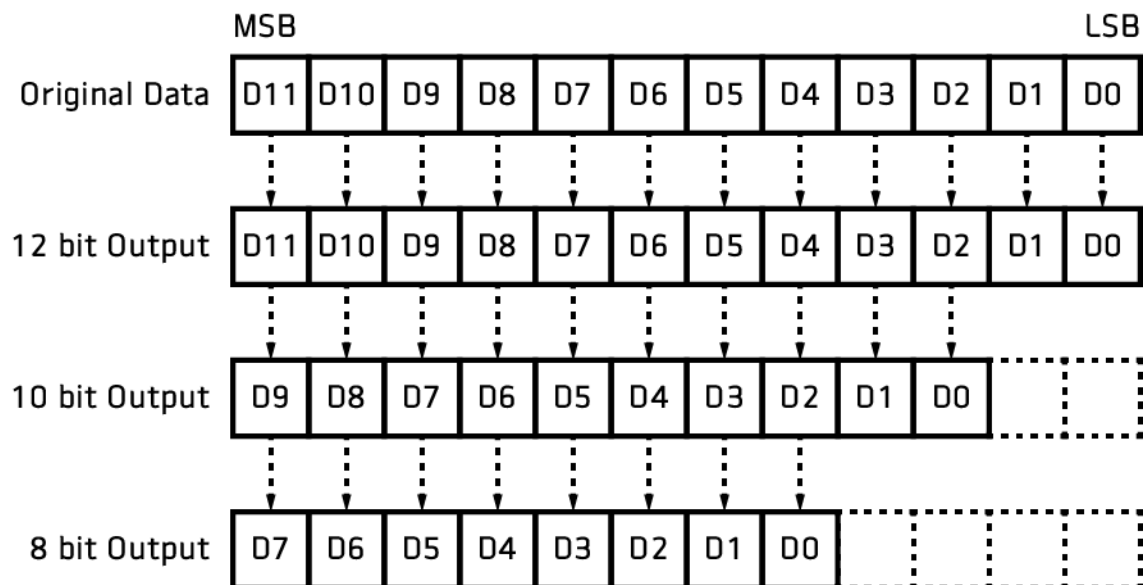


Figure 9.3 Data Bit

The command related to the Data Bit is as follows.

Configurator Parameter	Command	Value	Description
Data Bit	sdb 8	8 bit	Sets the data bit to 8 bit.
	sdb 10	10 bit	Sets the data bit to 10 bit.
	sdb 12	12 bit	Sets the data bit to 12 bit.

Table 9.10 Command related to Data Bit

## 9.7 Gain and Black Level

Increasing the **Gain** parameter increases all pixel values of the image. This results in a higher grey value output from the camera for a given amount of output from the image sensor.

1. Select a Gain Control parameter as desired.
2. Set the Gain parameter to the desired value.

Adjusting the **Black Level** parameter will result in an offset to the pixel values output from the camera.

1. Set the Black Level parameter to the desired value.
2. The available setting range varies depending on the Pixel Format settings.

The commands related to the Gain and Black Level are as follows.

Configurator Parameters	Command	Value	Description
Analog Gain	sag 1, 2, 3, 4	×1, ×2, ×3, ×4	Sets an absolute analog value.
Digital Gain	sdg f	×1.0 ~ ×8.0	Sets an absolute digital gain value. f: Float, 0 ~ 18 dB
Black Level	sdbl n	-255 ~ 255	Sets an absolute physical black level value. n: Integer

**Table 9.11** Commands related to Gain and Black Level



## 9.8 Optical Black Clamp

The Optical Black Clamp feature allows you to correct changes of pixel values due to changes of sensor temperature. With this function, the VT-4K5C camera minimizes changes of pixel's level by temperature through removing offsets from temperature differences in real time.

The XML parameters related to Optical Black Clamp are as follows.

XML Parameters	Value	Description
AnalogControl, OpticalBlackClamp	Off	Deactivates Optical Black Clamp feature
	On	Activates Optical Black Clamp feature

**Table 9.12 XML Parameters related to Optical Black Clamp**



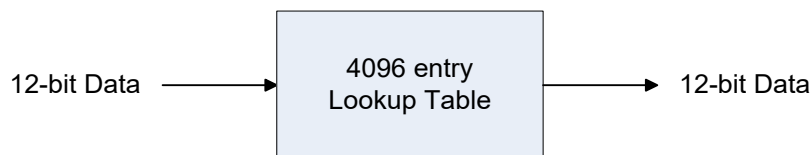
The Optical Black Clamp feature is only available on the VT-4K5C cameras.

## 9.9 LUT

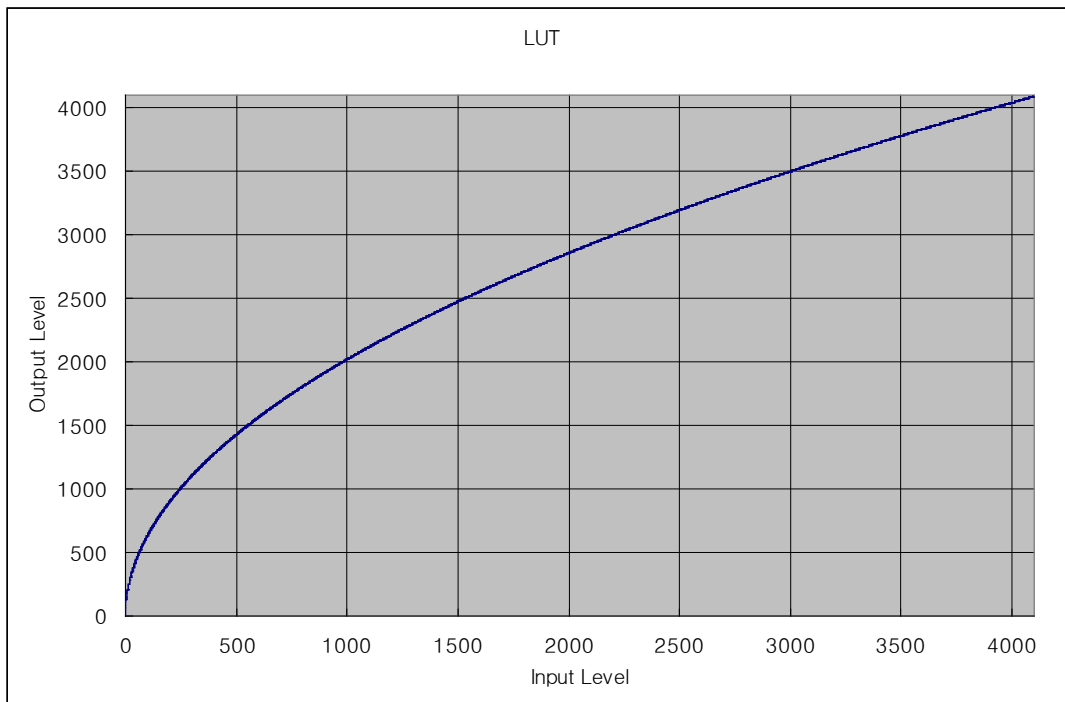
The Lookup Table (LUT) feature allows you to convert original image values to certain level values.

### Luminance

Since it is mapped one to one for each level value, 12bit output can be connected to 12bit input. The LUT is in the form of table that has 4096 entries between 0 – 4095 and VT camera provides a non-volatile space for LUT data storage. You can determine whether to apply LUT. For more information about how to download LUT to the camera, refer to [Appendix B](#).



**Figure 9.4 LUT Block**



**Figure 9.5 LUT at Gamma 0.5**

The commands related to the LUT feature are as follows.

Configurator Parameters	Command	Value	Description
LUT	sls 0	Off	Disables the LUT feature.
	sls 1	On	Enables the LUT feature.

**Table 9.13 Commands related to LUT**

## 9.10 Dark Signal Non-uniformity Correction

In theory, when a digital camera acquires images in complete darkness, all of the pixel values in the image should be near zero and they should be equal. In practice, however, slight variations in the performance of the pixels in the sensor will cause some variations in the pixel values output from the camera when the camera is acquiring in darkness. This variation is known as Dark Signal Non-Uniformity (DSNU). The VT Camera Link cameras provide the DSNU Correction feature.

The commands related to DSNU are as follows.

Configurator Parameters	Command	Value	Description
Generate All	gdda	-	Generates and saves the DSNU data for each Analog Gain setting value (×1, ×2, ×3, ×4).
Generate	gdd	-	Generates the DSNU data.
Save to Flash	sdd	-	Saves the generated DSNU data in the non-volatile memory. The generated data by executing the <b>Generate</b> parameter are saved in the volatile memory so that the data lost if the camera is reset or if power is turned off. To use the data after the camera is powered on or reset, save them in the non-volatile memory.
Load from Flash	ldd	-	Loads the DSNU data from the non-volatile memory into the volatile memory.

**Table 9.14** Commands related to DSNU

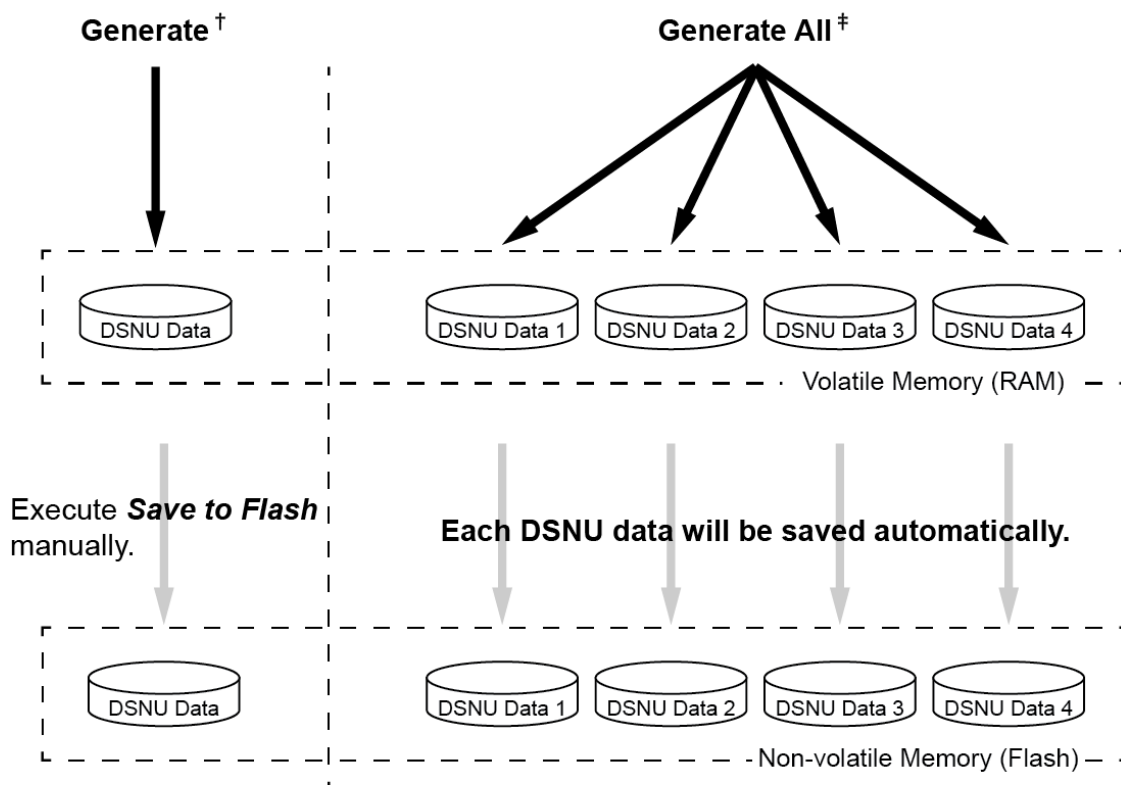
## 9.10.1 Generating and Saving User DSNU Correction Values

To generate and save user DSNU correction values, use the following procedure.



For optimum DSNU correction results, we recommend to generate DSNU data after the temperature of the camera housing has been stabilized.

1. The camera will use the entire sensor when generating DSNU correction values. Therefore, we recommend that you set the ROI setting to use the entire width of the sensor.
2. Ensure that the camera will be acquiring line images in complete darkness by covering the camera lens, closing the iris in the lens, or darkening the room.
3. Begin acquiring line images either by setting the camera for the Free-Run mode or by supplying external trigger signals to trigger line acquisitions.
4. Generate DSNU correction values.
  - Go to step 5 if you execute the **Generate** command to generate DSNU data.
  - Go to step 6 if you execute the **Generate All** command to generate DSNU data.
5. If you execute the **Generate** command,
  - a. The camera generates DSNU data according to the current Analog Gain setting value. The camera must acquire at least 1024 line images to create a set of DSNU correction values.
  - b. After completing 1024 line acquisitions, the generated DSNU correction values will be activated and saved in the camera's volatile memory.
  - c. To save the generated DSNU correction values in the camera's Flash (non-volatile) memory, execute the **Save to Flash** command. The previous DSNU values for the current Analog Gain setting value saved in the memory will be overwritten.
6. If you execute the **Generate All** command,
  - a. The camera generates the DSNU data for each Analog Gain setting value ( $\times 1$ ,  $\times 2$ ,  $\times 3$ ,  $\times 4$ ) and then executes the **Save to Flash** command automatically. The camera must acquire at least 4096 line images to create sets of DSNU correction values.
  - b. After completing 4096 line acquisitions, the generated DSNU correction values according to the current Analog Gain setting values will be activated.
7. If you change the Analog Gain setting values or want to load the existing values in the Flash memory, execute the **Load from Flash** command.



† . The camera generates **DSNU data** according to **the current Analog Gain setting**.

‡ . The camera generates **four different DSNU data** according to **the Analog Gain setting values**.

**Figure 9.6 Generating and Saving DSNU Correction Values**

## 9.11 Photo Response Non-uniformity Correction

In theory, when a line scan camera acquires images with the camera viewing a uniform light-colored target in bright light, all of the pixel values in the image should be near the maximum grey value and they should be equal. In practice, however, slight variations in the performance of the pixels in the sensor, variations in the optics, and variations in the lighting will cause some variations in the pixel values output from the camera. This variation is known as Photo Response Non-uniformity (PRNU). The VT Camera Link cameras provide the PRNU Correction feature and five storage locations for PRNU correction values.

The commands related to PRNU are as follows.

Configurator Parameters	Command	Value	Description
PRNU Correction	sprnu 0	Off	Disables the PRNU Correction feature.
	sprnu 1	On	Enables the PRNU Correction feature.
PRNU Selector	spi 0, 1, 2, 3, 4	0/1/2/3/4	Selects a location to save PRNU data to or load PRNU data from.
Auto	gpd 0	-	Select to set the PRNU Target Level automatically.
Target	-	1 ~ 255	Sets the PRNU Target Level.
Generate	gpd n	0 ~ 255	Generates the PRNU data. 0: Auto, 1 ~ 255: Sets the PRNU Target Level.
Save to Flash	spd	-	Saves the generated PRNU data in the non-volatile memory. The generated data by executing the <b>Generate</b> command are saved in the volatile memory so that the data are lost if the camera is reset or if power is turned off. To use the data after the camera is powered on or rest, save them in the non-volatile memory.
Load from Flash	lpd	-	Loads the PRNU data from the non-volatile memory into the volatile memory.

**Table 9.15 Commands related to PRNU**

## 9.11.1 Generating and Saving User PRNU Correction Values

To generate and save user PRNU correction values, use the following procedure.



We strongly recommend that you generate new PRNU correction values whenever you make a change to the optics or lighting or if you change the camera's line rate. For optimum PRNU correction results, we recommend to generate DSNU correction values first before generating PRNU correction values.

1. The camera will use the entire sensor when generating PRNU correction values. Therefore, we recommend that you set the ROI settings to use the entire width of the sensor.
2. Place a uniform white target in the field of view of the camera. Adjust the optics, lighting and line rates as you would for normal operation. We recommend that you make adjustments to achieve the digital output level in a range from 100 to 200 (Gain: 1.00 at 8 bit).
3. Begin acquiring line images either by setting the camera for the Free-Run mode or by supplying external trigger signals to trigger line acquisition.
4. Set the Target Level.
  - To set the Target Level automatically, select the **Auto** check box.
  - To set the Target Level manually, deselect the **Auto** check box and input the target level in a range from 1 to 255 into the **Target** input box.
5. Execute the **Generate** command to generate PRNU correction values.
6. The camera must acquire at least 1024 line images to create a set of PRNU correction values.
7. After completing 1024 line acquisitions, the generated PRNU correction values will be activated and saved in the camera's volatile memory.
8. To save the generated PRNU correction values in the camera's Flash (non-volatile) memory, specify a location to save by using the **PRNU Selector** parameter and execute the **Save to Flash** command. The existing values in the memory will be overwritten.  
To ignore the generated PRNU correction values and load the existing values in the Flash memory, specify a location to load from by using the **PRNU Selector** parameter and execute the **Load from Flash** command.

## 9.12 Reverse X

The Reverse X feature lets you flip the image horizontally. This feature is available in all operation modes.



Figure 9.7 Original Image



Figure 9.8 Reverse X Image

The commands related to Reverse X is as follows.

Configurator Parameters	Command	Value	Description
Reverse X	shf 0	-	Disables the Reverse X feature.
	shf 1	-	Enables the Reverse X feature.

Table 9.16 Commands related to Reverse X



### 9.13 Camera Link Output

The VT Camera Link cameras supports 2 Tap, 4 Tap, 8 Tap and 10 Tap Camera Link output modes. The number of taps represents the number of pixel data that will be output on each cycle of the Camera Link pixel clock. The maximum allowed line rate will be changed according to the Tap Mode settings. The line image data is transmitted in the interleaved order as shown in the figure below.

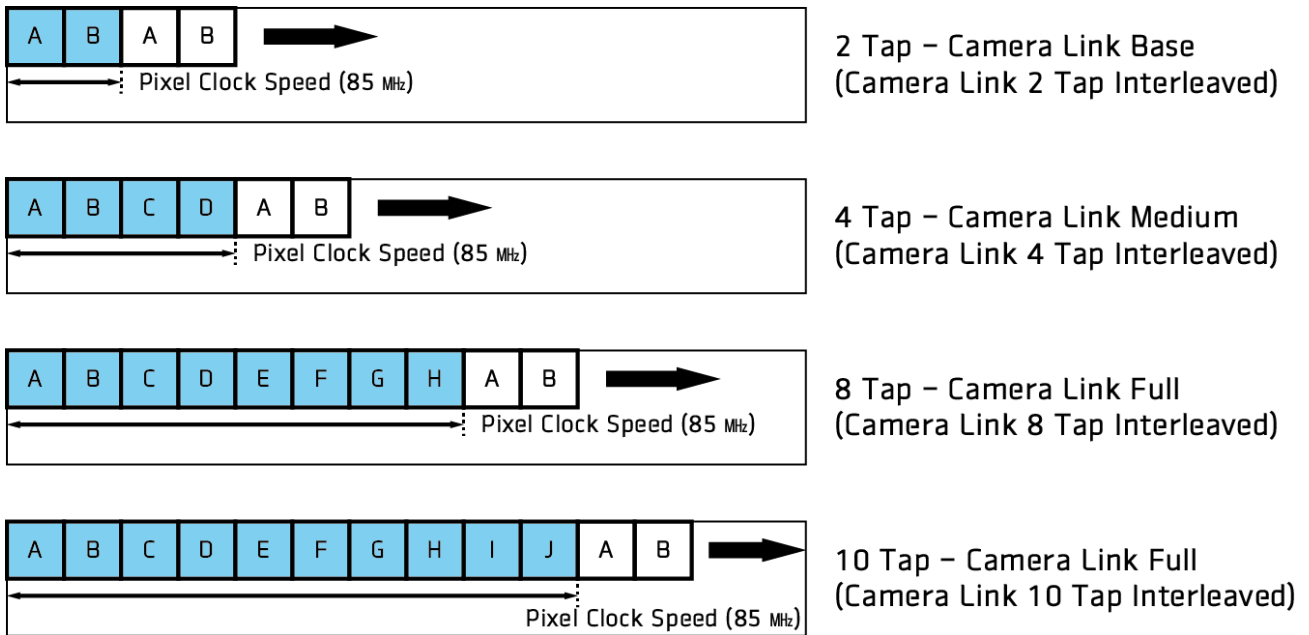


Figure 9.9 Camera Link Output Mode

The commands related to Camera Link Output Mode are as follows.

Configurator Parameters	Command	Value	Description
Tap Mode	scl 0	2 Tap	Sets the Camera Link Output Mode to 2 Tap.
	scl 1	4 Tap	Sets the Camera Link Output Mode to 4 Tap.
	scl 2	8 Tap	Sets the Camera Link Output Mode to 8 Tap.
	scl 3	10 Tap	Sets the Camera Link Output Mode to 10 Tap.

Table 9.17 Commands related to Camera Link Output Mode

## 9.14 Strobe Mode

The VT Camera Link cameras can output pulse signals through the control I/O receptacle. You can set a width of the pulse signal by using the **Strobe Mode** parameter. This feature is useful when you need to supply source signals to the other devices such as a Strobe Controller.

The commands related to Strobe Mode are as follows.

Configurator Parameters	Command	Value	Description
Strobe Mode	ssm 0	Off	Disables the Strobe Mode feature.
	ssm 1	Timed	Outputs pulse signals according to the Strobe Duration setting value.
	ssm 2	Pulse Width	Outputs pulse signals of which the period is equal to the trigger signals applied to the camera.
	ssm 3	On	Outputs continuous High signals.
Strobe Inverter	ssp 0	-	Deselect not to invert the output signal.
	ssp 1	-	Select to invert the output signal.
Strobe Duration	ssr f	1.00 ~ 1000.00	Sets a duration of the pulse signal in microseconds when the Strobe Mode is set to Timed.
Strobe Delay	sto f	0.00 ~ 1000.00	Sets a delay to the current output signal in microseconds.

**Table 9.18 Commands related to Strobe Mode**

## 9.15 Temperature Monitor

The camera has an embedded sensor chip to monitor the internal temperature.

The command related to the device temperature is as follows.

Command	Description
gct	Displays device temperature in Celsius.

**Table 9.19 Command related to Device Temperature**

## 9.16 Status LED

A red/green LED is installed on the back panel of the camera to inform the operation status of the camera. LED status and corresponding camera status are as follows.

Status LED	Descriptions
Steady Red	Camera is not initialized.
Steady Green	Camera is waiting for transmitting images.
Fast Flashing Green	Camera is acquiring images.

**Table 9.20 Status LED**

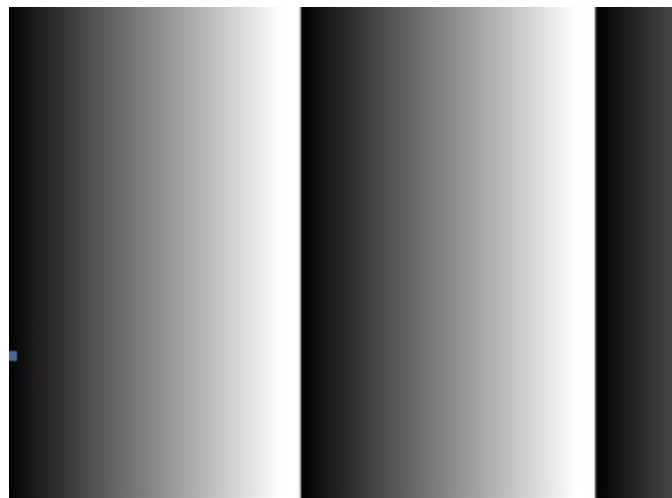
## 9.17 Test Image

To check normal operation of the camera, it can be set to output test images created inside, instead of image data from the image sensor. There are three types of test images; image with different value in horizontal direction (Test #1), image with different value in diagonal direction (Test #2), and moving image with different value in diagonal direction (Test #3).

The commands related to Test Image are as follows.

Configurator Parameters	Command	Value	Description
Test Image	sti 0	Off	Disables the Test Image feature.
	sti 1	Test #1	Sets the Test Image to Test #1.
	sti 2	Test #2	Sets the Test Image to Test #2.
	sti 3	Test #3	Sets the Test Image to Test #3.

**Table 9.21 Command related to Test Image**



**Figure 9.10 Test #1**

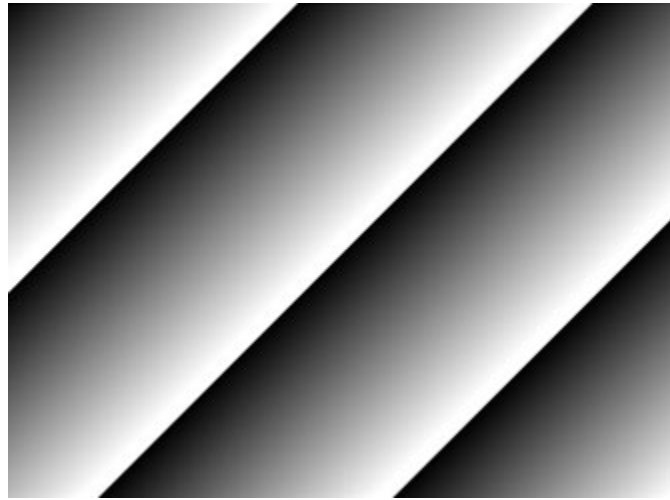


Figure 9.11 Test #2



Figure 9.12 Test #3



The test image may look different because the region of the test image may vary depending on the camera's resolution.

## 9.18 Pre-emphasis (M72 based VT Series Only)

The Pre-emphasis feature provided by the VT Camera Link cameras increases the available Camera Link cable length up to 10 meters with a Camera Link pixel clock of 85 MHz.

The commands related to Pre-emphasis are as follows.

Configurator Parameters	Command	Value	Description
Pre-emphasis	spe 0	Off	Disables the Pre-emphasis feature.
	spe 1	On	Enables the Pre-emphasis feature.

**Table 9.22 Command related to Pre-emphasis**

## 9.19 Camera Link Pixel Clock

The Pixel Clock feature of VT CL camera models allows you to select a Camera Link pixel clock so that you can increase the available Camera Link cable length or extend the Camera Link bandwidth. Typically, you can extend the Camera Link cable length up to 15 meters with a Camera Link pixel clock of 40 MHz.

Configurator Parameters	Command	Value	Description
Pixel Clock (M72 Series)	sccs 0	47.5 MHz	Sets the Camera Link Pixel Clock to 47.5 MHz.
	sccs 1	50 MHz	Sets the Camera Link Pixel Clock to 50 MHz.
	sccs 2	52.5 MHz	Sets the Camera Link Pixel Clock to 52.5 MHz.
	sccs 3	55 MHz	Sets the Camera Link Pixel Clock to 55 MHz.
	sccs 4	57.5 MHz	Sets the Camera Link Pixel Clock to 57.5 MHz.
	sccs 5	60 MHz	Sets the Camera Link Pixel Clock to 60 MHz.
	sccs 6	62.5 MHz	Sets the Camera Link Pixel Clock to 62.5 MHz.
	sccs 7	65 MHz	Sets the Camera Link Pixel Clock to 65 MHz.
	sccs 8	67.5 MHz	Sets the Camera Link Pixel Clock to 67.5 MHz.
	sccs 9	70 MHz	Sets the Camera Link Pixel Clock to 70 MHz.
	sccs 10	72.5 MHz	Sets the Camera Link Pixel Clock to 72.5 MHz.
	sccs 11	75 MHz	Sets the Camera Link Pixel Clock to 75 MHz.
	sccs 12	77.5 MHz	Sets the Camera Link Pixel Clock to 77.5 MHz.
	sccs 13	80 MHz	Sets the Camera Link Pixel Clock to 80 MHz.
	sccs 14	82.5 MHz	Sets the Camera Link Pixel Clock to 82.5 MHz.
sccs 15	85 MHz	Sets the Camera Link Pixel Clock to 85 MHz.	

Pixel Clock (M42 Series)	sccs 0	40 MHz	Sets the Camera Link Pixel Clock to 40 MHz.
	sccs 1	60 MHz	Sets the Camera Link Pixel Clock to 60 MHz.
	sccs 2	80 MHz	Sets the Camera Link Pixel Clock to 80 MHz.
	sccs 3	85 MHz	Sets the Camera Link Pixel Clock to 85 MHz.

**Table 9.23 Command related to Pixel Clock**

## 9.20 Field Upgrade

The camera provides a feature to upgrade Firmware and FPGA logic through the Camera Link interface rather than disassemble the camera in the field. Refer to [Appendix A](#) for more details on how to upgrade.

## 10 Camera Configuration

### 10.1 Setting Commands

You can configure all camera settings via RS-644 serial interface of the Camera Link. When you want to control the camera using a terminal or to access directly to the camera at your application, you need to set your network as follows.

```
Baud Rate:      115200 bps
Data Bit:       8 bit
Parity Bit:     No Parity
Stop Bit:       1 stop bit
Flow Control:   None
```

All camera setting commands are transmitted in the ASCII command type except a command for transmitting a large file such as firmware download. All camera setting commands are transmitted from the user application and then the camera returns a response ("OK", "Error" or information) for a command. When you execute a write command, the camera returns a response to inform whether the command has been successfully executed. When you execute a read command, the camera returns an error or information.

```
Command Format:
<command> <parameter1> <parameter2> <cr>
0 - 2 parameters follow the command.
Response:
If a write command is successfully executed
OK <cr> <lf>
```

#### ex) Write Command

```
In response to a "set 100" command the camera will return (in hex value)
Command:  73 65 74 20 31 30 30 0D
          set 100<cr>
Response: 73 65 74 20 31 30 30 0D 0A 4F 4B 0D 0A 3E
          set 100<cr><lf>          OK<cr><lf>  >
Echo      result                  prompt
```



```
If a read command is successfully executed  
<parameter1> <cr> <lf>
```

#### ex) Read Command

```
In response to a "get" command the camera will return (in hex value)  
Command: 67 65 74 0D  
         get <cr>  
Response: 67 65 74 0D 0A 31 30 30 0D 0A 3E  
         get<cr><lf> 100<cr><lf> >  
Echo      response  prompt
```

```
If a command is not executed successfully  
Error: <Error Code> <cr> <lf>
```

```
Prompt:  
A prompt always follows after the response. '>' is used as prompt.
```

#### Types of Error Code

```
0x80000481: value of parameter is not valid  
0x80000482: the number of parameter is not matched  
0x80000484: command does not exist  
0x80000486: no permission to execute
```

## 10.2 User Set Control

The VT Camera Link cameras provide three non-volatile spaces (Flash) for storing parameter settings and one work space (RAM) for operating the camera. Non-volatile spaces are divided into a Factory space (Factory Setting) that contains default setting values entered during the manufacturing, and two User spaces (User 1 Setting and User 2 Setting) that are available for saving user-defined setting values.

You can save the current camera settings to a user space or you can load the settings stored in one of the non-volatile spaces into the camera's work space. The default setting values stored in the factory space can be loaded into the camera's work space, but cannot be changed.

The setting values in the camera's volatile memory will be lost if the camera is reset or powered off.

To use the current setting values in the work space after a reset, you must save the settings to one of the user spaces.

By default, the Factory Setting will be loaded into the camera when the camera is reset or powered on. You can change the Configuration Initialization value to select which setting values will be loaded when the camera is reset or powered on.

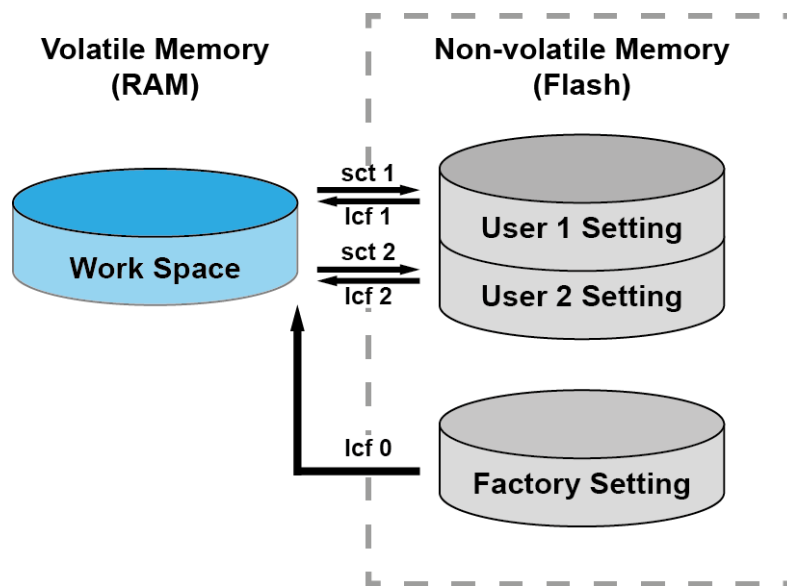


Figure 10.1 User Set Control

The commands related to User Set are as follows.

Configurator Parameters	Command	Value	Description
Load Setting	lcf 0	Factory Space	Loads the Factory Default Settings to the camera.
	lcf 1	User 1 Space	Loads the User 1 Settings to the camera.
	lcf 2	User 2 Space	Loads the User 2 Settings to the camera.
Save Setting	sct 1	User 1 Space	Saves the current settings to the User 1 Setting.
	sct 2	User 2 Space	Saves the current settings to the User 2 Setting.
Start-Up	sci 0	Factory Setting	Applies the Factory Default Settings when reset.
	sci 1	User 1 Setting	Applies the User 1 Settings when reset.
	sci 2	User 2 Setting	Applies the User 2 Settings when reset.

**Table 10.1 Commands related to User Set Control**

## 10.2.1 Factory Default Setting Values

When you power the VT Camera Link camera for the first time on, the factory default setting values will be loaded into the camera and the factory default setting values are as follows.

Configurator Parameters	Value
Operation Mode	TDI
Direction	Forward
TDI Stages	Maximum Integration Stages
Trigger Mode	Off
Test Image	None
Binning	× 1
Data Bit	8
PRNU Correction	On
Tap Mode	8 Tap
Analog Gain	× 1
Digital Gain	× 1
Line Rate	35 kHz

**Table 10.2 Factory Default Setting Values**

## 10.3 Command List

You can set all features provided by the VT Camera Link camera by using the following commands.

Command Syntax		Return Value	Description
Help	help	String	Displays a list of all commands.
Set Offset X	sox n	OK	X coordinate of start point ROI
Get Offset X	gox	n	n: X axis offset
Set Image Width	siw n	OK	Width of ROI, n: Width value VT3K7C: 256 ~ 3200 VT4K5C: 256 ~ 4640 VT-4K7C/14C: 256 ~ 4096 VT-6K3.5C: 256 ~ 6560 VT-9K: 256 ~ 8912 VT-12K: 256 ~ 12480 VT-18K: 256 ~ 17824
Get Image Width	giw	n	
Set Binning Horizontal	sbh 1 2	OK	Sets the horizontal binning. 1: ×1 binning horizontal (No binning)
Get Binning Horizontal	gbh	1 2	2: ×2 binning horizontal
Set Binning Vertical	sbv 1 2	OK	Sets the vertical binning. 1: ×1 binning vertical (No binning)
Get Binning Vertical	gbv	1 2	2: ×2 binning vertical
Set Test Image	sti 0 1 2 3	OK	Sets the Test Image. 0: Test Image Off
Get Test Image	gti	0 1 2 3	1, 2: Fixed pattern image 3: Moving pattern image
Set Scan Direction	ssd 0 1 2	OK	Sets the camera's scan direction. 0: Forward
Get Scan Direction	gsd	0 1 2	1: Reverse 2: Line 1 (External Port)
Set Data Bit	sdb 8 10 12	OK	Sets the camera's data bit. 8: 8 bit output
Get Data Bit	gdb	8 10 12	10: 10 bit output 12: 12 bit output

**Table 10.3 Command List #1**

Command Syntax		Return Value	Description
Set TDI Stage Get TDI Stage	std 1 2 3 4 gtd	OK 1 2 3 4	Sets the number of TDI Stage. 1: 16 Stage 2: 32 Stage 3: 48 Stage 4: 64 Stage VT-4K14C
Set TDI Stage Get TDI Stage	std 1 2 3 4 gtd	OK 1 2 3 4	1: 32 Stage 2: 64 Stage 3: 96 Stage 4: 128 Stage VT-3K7C VT-4K7C VT-9K7C
Set TDI Stage Get TDI Stage	std 1 2 3 4 gtd	OK 1 2 3 4	1: 64 Stage 2: 128 Stage 3: 192 Stage 4: 256 Stage VT-4K5C VT-6K3.5C VT-12K5C VT-18K3.5C
Set Line Rate Get Line Rate	slr f glr	OK f	Sets the camera's line rate. f: Line period ( $\mu s$ ) <Float>
Set Exposure Time Get Exposure Time	set n get	OK n	Sets an exposure time (When the Operation Mode is set to Area) n: exposure time in microseconds ( $\mu s$ )
Set Trigger Mode Get Trigger Mode	stm 0 1 gtm	OK 0 1	Sets the Trigger Mode. 0: Free-Run mode 1: Activates the Trigger Mode.
Set Horizontal Flip Get Horizontal Flip	shf 0 1 ghf	OK 0 1	Enables the Reverse X feature. 0: Disables the Reverse X feature. 1: Enables the Reverse X feature.
Set Trigger Source Get Trigger Source	sts 1 5 gts	OK 1 5	Specifies a source signal when the Trigger Mode is set to On. 1: CC1 port (Camera Link) 5: External port (Line 1)
Set Trigger Activation Get Trigger Activation	sta 0 1 2 gta	OK 0 1 2	Specifies a polarity of trigger when the Trigger Mode is set to On. 0: Falling 1: Rising 2: Both

Table 10.4 Command List #2

Command Syntax		Return Value	Description
Set Trigger Rescaler Mode Get Trigger Rescaler Mode	srm 0 1 grm	OK 0 1	Enables the Trigger Rescaler feature. 0: Disables the Trigger Rescaler feature. 1: Enables the Trigger Rescaler feature.
Set Trigger Rescaler Rate Get Trigger Rescaler Rate	srr f grr	OK f	Sets the trigger rescaler rate. f: Rescaler rate <Float> (Setting range: 0.010 ~ 100.000)
Set Trigger Rescaler Filter Get Trigger Rescaler Filter	srf 0 1 2 3 4 5 grf	OK 0 1 2 3 4 5	Sets the Trigger Rescaler Noise Filter. 0: 16            1: 32 2: 64            3: 128 4: 256          5: 512
Set Operation Mode Get Operation Mode	som 0 1 gom	OK 0 1	Sets the camera's operation mode. 0: TDI mode 1: Area mode
Set Strobe Mode Get Strobe Mode	ssm 0 1 2 3 gsm	OK 0 1 2 3	Sets whether to output strobe signals. 0: Off 1: Outputs strobe signals according to the Strobe Duration setting value. 2: Outputs signals of which the width is equal to the trigger signals applied to the camera. 3: Outputs continuous High signals.
Set Strobe Inverter Get Strobe Inverter	ssp 0 1 gsp	OK 0 1	Sets whether to invert strobe signals. 0: Disables the inversion of strobe signals. 1: Enables the inversion of strobe signals.
Set Strobe Delay Get Strobe Delay	sto f gto	OK f	Sets a delay to the strobe signal. f: Strobe delay ( $\mu$ s) <Float> (Setting range: 0.00 ~ 1000.00 $\mu$ s)
Set Strobe Duration Get Strobe Duration	ssr f gsr	OK f	Sets a width of the strobe signal in microseconds when the Strobe Mode is set with the ssm 1 command. f: Strobe duration ( $\mu$ s) <Float> (Setting range: 1.00 ~ 1000.00 $\mu$ s)

Table 10.5 Command List #3

Command Syntax		Return Value	Description
Set Analog Gain	sag 1 2 3 4	OK	Sets the Analog Gain.
Get Analog Gain	gag	1 2 3 4	1/2/3/4: Analog gain (×1, ×2, ×3, ×4)
Set Digital Gain	sdg f	OK	Sets the Digital Gain.
Get Digital Gain	gdg	f	f: Digital gain <Float> (Setting Range: 1.000 ~ 8.000)
Set Black Level	sdbl n	OK	Sets the Black Level.
Get Black Level	gdbl	n	n: Black level (Setting Range: -255 ~ 255)
Generate DSNU Data All	gdda	OK	Generates and saves the DSNU data for each Analog Gain setting values.
Generate DSNU Data	gdd	OK	Generates the DSNU data for the current Analog Gain setting value.
Save DSNU Data	sdd	OK	Saves the generated DSNU data in the non-volatile memory.
Load DSNU Data	ldd	OK	Loads the DSNU data from the non-volatile memory into the volatile memory.
Set DSNU Transform	sdt n1 (n2) v1	OK	Performs additional correction to the PRNU correction values. n1: X coordinate of a start pixel n2: X coordinate of an end pixel v1: Black level value to be added to the specified region (-255 ~ 255)
Set DSNU Coefficient Get DSNU Coefficient	sdc n f1 sdc n1 n2 f1 gdc n1 (n2)	OK f1	Sets or retrieves the DSNU Correction Coefficient. n: X coordinate of a pixel to set n1: X coordinate of a start pixel n2: X coordinate of an end pixel f1: DSNU correction coefficient (Black Level = 0.1 ~ 4095)

Table 10.6 Command List #4

Command Syntax		Return Value	Description
Set LUT Select Get LUT Select	sls 0 1 gls	OK 0 1	Sets the LUT feature. 0: Disables the LUT feature. 1: Enables the LUT feature.
Generate PRNU Data	gpd n	OK	Generates the PRNU data. n: Target level (Setting Range: 1 ~ 255, 0: Auto)
Set PRNU Mode Get PRNU Mode	sprnu 0 1 gprnu	OK 0 1	Sets the PRNU Correction feature. 0: Disables the PRNU Correction feature. 1: Enables the PRNU Correction feature.
Save PRNU Data	spd	OK	Saves the PRNU data in the non-volatile memory.
Load PRNU Data	lpd	OK	Loads the PRNU data from the non-volatile memory into the volatile memory.
PRNU Selector	spi 0 1 2 3 4 gpi	OK 0 1 2 3 4	Selects a location to save PRNU data to or load PRNU data from. 0/1/2/3/4: PRNU data storage area
Set PRNU Transform	spt n1 (n2) f1	OK	Performs additional correction to the PRNU correction values. n1: X coordinate of a start pixel n2: X coordinate of an end pixel f1: Gain value to be multiplied to the specified region (0.1 ~10.0).
Set PRNU Coefficient Get PRNU Coefficient	spc n f1 spc n1 n2 f1 gpc n1 (n2)	OK f1	Sets or retrieves the PRNU Correction Coefficient. n: X coordinate of a pixel to set n1: X coordinate of a start pixel n2: X coordinate of an end pixel f1: PRNU correction coefficient (Gain = 0.1 ~10.0)
Set Camera Link mode Get Camera Link mode	scl 0 1 2 3 gcl	OK 0 1 2 3	Sets the Camera Link Output mode. 0: 2 Tap 1: 4 Tap 2: 8 Tap 3: 10 Tap

Table 10.7 Command List #5



Command Syntax		Return Value	Description
Set Pre-emphasis mode Get Pre-emphasis mode	spe 0 1 gpe	OK 0 1	Sets the Pre-emphasis feature. 0: Disables the Pre-emphasis feature. 1: Enables the Pre-emphasis feature.
Set Camera Link Clock Speed Get Camera Link Clock Speed	sccs 0 1 2 3 gccs	OK 0 1 2 3	Sets the Camera Link Pixel Clock. 0: 40 MHz 1: 60 MHz 2: 80 MHz 3: 85 MHz
Load Config From	lcf 0 1 2	OK	Loads camera setting values to the camera's work space. 0: Loads from Factory space. 1: Loads from User 1 space. 2: Loads from User 2 space.
Save Config To	sct 1 2	OK	Saves the current camera setting values. 1: Saves to User 1 space. 2: Saves to User 2 space.
Set Config Initialization Get Config Initialization	sci 0 1 2 gci	OK 0 1 2	Specifies setting values to be loaded when reset. 0: Applies Factory default settings when reset. 1: Applies User 1 settings when reset. 2: Applies User 2 settings when reset.
Get MCU Version	gmv	String	Displays the version of camera MCU.
Get Model Number	gmn	String	Displays camera model name.
Get FPGA Version	gfv	String	Displays the version of camera FPGA.
Get Serial Number	gsn piece	String	Displays the serial number of the camera.
Get Current Temperature	gct	String	Displays device temperature in Celsius.
Reset	rst	-	Resets the camera.

Table 10.8 Command List #6

## 11 Configurator GUI

Configurator, a sample application, is provided to control the VT Camera Link cameras. Configurator provides easy-to-use Graphic User Interface (GUI) that allows users to view and change the camera's settings mentioned in the previous chapters.

### 11.1 Camera Scan

When you execute the Configurator.exe file while the camera is powered on, the **Camera Scan** window appears as shown in the figure below. At this time, the Configurator checks serial ports of your computer and DLL provided by the Camera Link to scan whether a camera is connected. If the Configurator finds a connected camera, it displays the model name of the camera on the Camera Scan window. If the camera is not displayed on the window, check the cable connections and power of the camera, and then press the **refresh** button. Double-clicking the model name of the camera displayed on the window will launch the Configurator and display the current parameter settings of the camera connected.

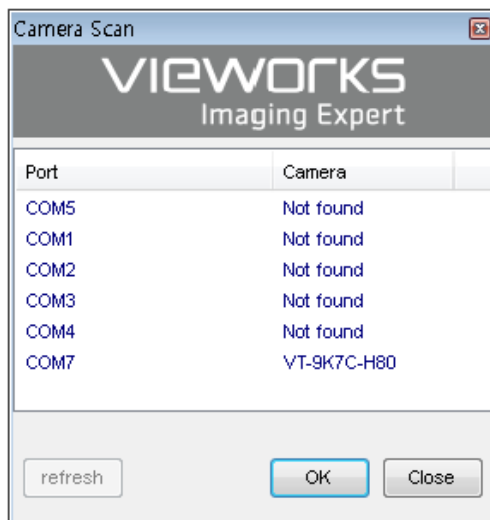
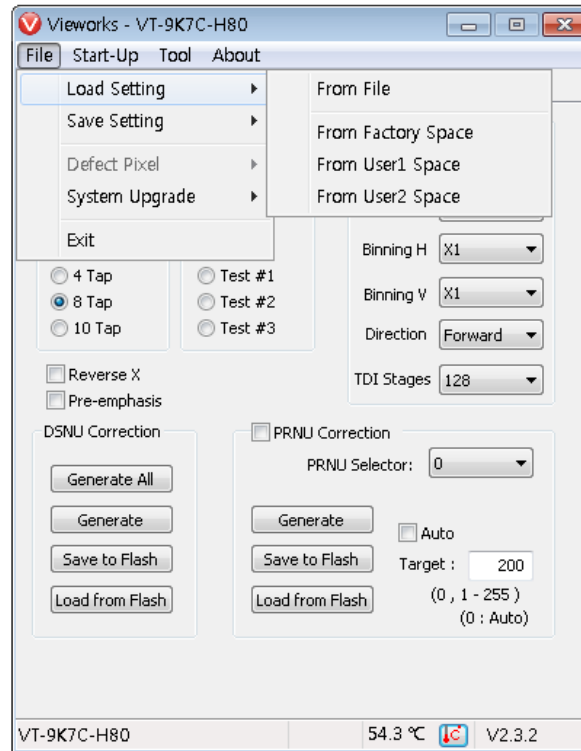


Figure 11.1 Configurator Loading Window

## 11.2 Menu

### 11.2.1 File

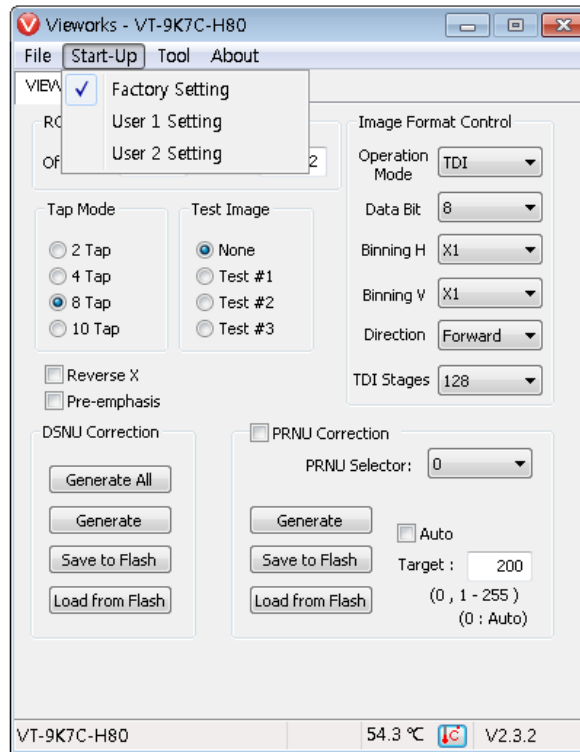


**Figure 11.2 File Menu**

- **Load Setting:** Loads the camera setting values from the camera memory (Factory, User1 or User2) or user's computer (From File).
- **Save Setting:** Saves the camera setting values to the camera memory (User1 or User2) or user's computer (To File).
- **System Upgrade:** Upgrades MCU or FPGA logic.
- **Exit:** Exits the Configurator.

## 11.2.2 Start-Up

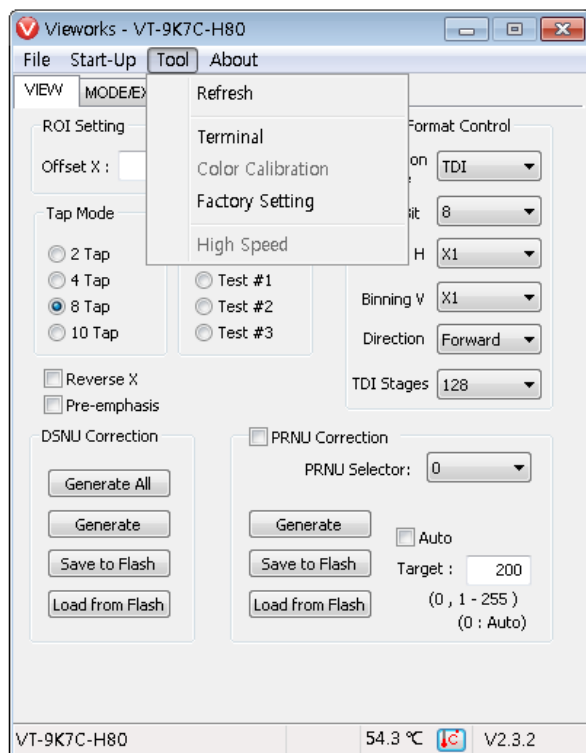
You can select the camera setting values to load when the camera is powered on.



**Figure 11.3 Start-Up Menu**

- **Factory Setting:** Loads the camera setting values from Factory Space when the camera is powered on.
- **User1 Setting:** Loads the camera setting values from User1 Space when the camera is powered on.
- **User2 Setting:** Loads the camera setting values from User2 Space when the camera is powered on.

## 11.2.3 Tool



**Figure 11.4 Tool Menu**

- **Refresh:** Loads and displays the current camera setting values on Configurator.
- **Terminal:** Displays user commands in the Terminal window under the GUI. To hide the Terminal window, uncheck Terminal by clicking again.
- **Factory Setting:** Not supported for users.
- **High Speed:** Not supported on the VT Camera Link cameras.

### 11.2.4 About

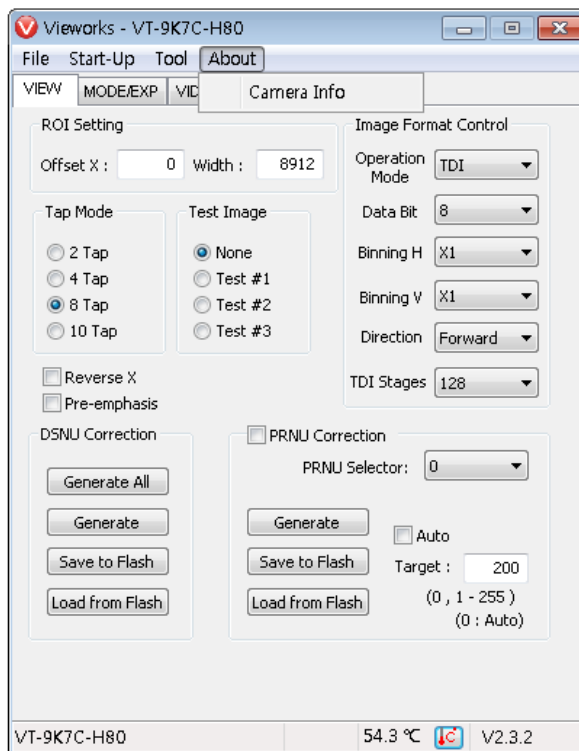


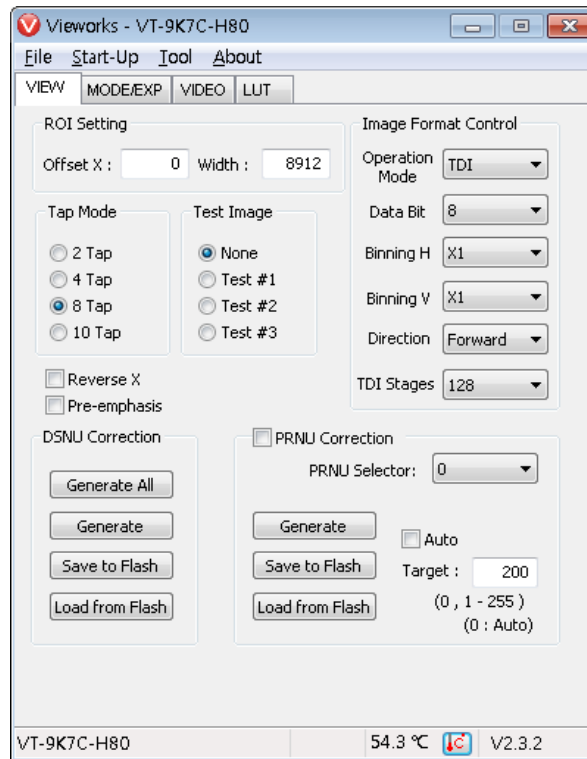
Figure 11.5 About Menu

- **Camera Info:** Displays camera information (model name, serial number, version, etc.).

## 11.3 Tab

### 11.3.1 VIEW Tab

The VIEW tab allows you to set the camera's region of interest (ROI), test image mode, operation mode, data bit, Camera Link output mode, binning, scan direction, TDI stage, DSNU, PNRU features, etc.

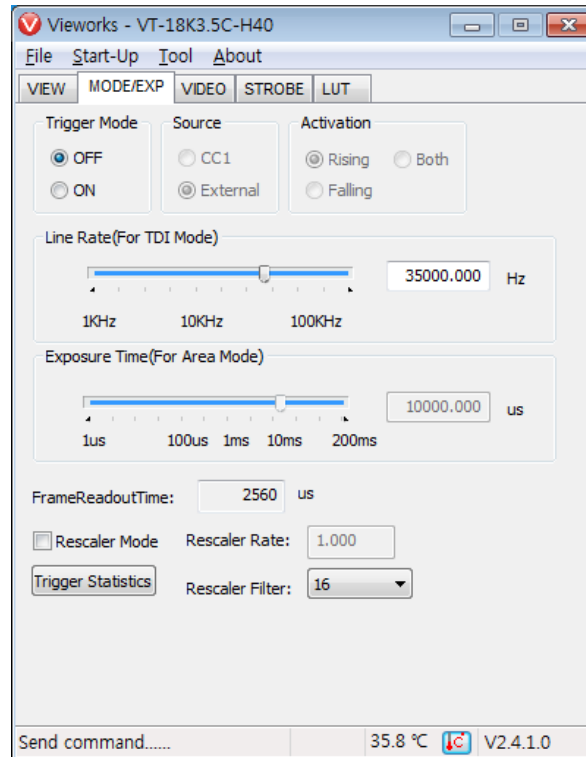


**Figure 11.6 VIEW Tab**

- **ROI Setting:** Sets the camera's ROI by using the Offset X and Width input box.
- **Tap Mode:** Selects a Camera Link output mode.
- **Test Image:** Selects whether to apply test image and a type of test images.
- **Reverse X:** Sets the Reverse X feature On or Off.
- **Pre-emphasis:** Sets the Pre-emphasis On or Off.
- **Image Format Control:** Sets the Operation Mode, bit depth of data output, Binning feature, Scan Direction and TDI Stages.
- **DSNU Correction:** Sets the DSNU Correction feature.
- **PRNU Correction:** Sets the PRNU Correction feature.

### 11.3.2 MODE/EXP Tab

The MODE/EXP tab allows you to configure the camera's trigger mode, line rate, exposure time, trigger rescaler and trigger statistics.



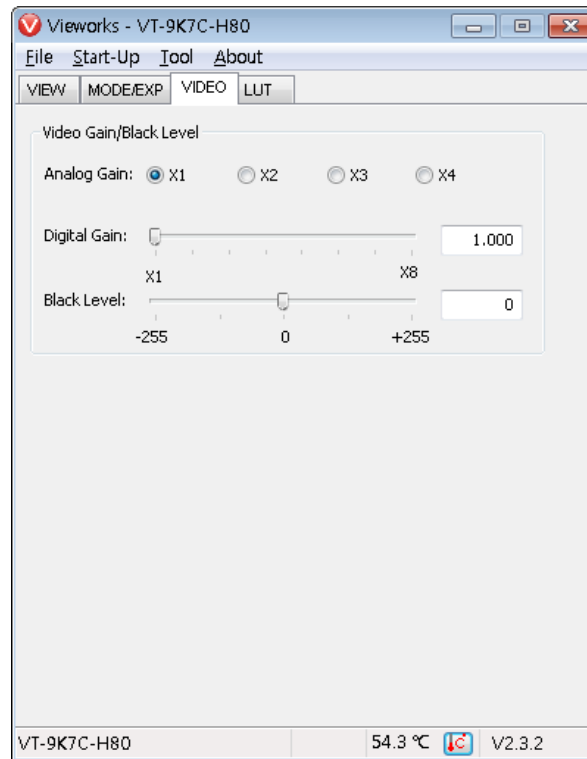
**Figure 11.7 MODE/EXP Tab**

- **Trigger Mode:** Sets the trigger mode.
- **Source:** Selects a source signal for exposure triggering.
- **Activation:** Selects a polarity of trigger signals.
- **Exposure Time:** Sets exposure time when the Operation Mode is set to Area and the Trigger Mode is set to Off.
- **Line Rate:** Sets line rate when the Operation Mode is set to TDI and the Trigger Mode is set to Off.
- **Rescaler Mode:** Sets the trigger Rescaler Mode.
- **Trigger Statistics:** Determines the trigger signals applied to the camera and then converted by the Trigger Rescaler.



### 11.3.3 VIDEO Tab

The VIDEO Tab allows you to adjust the camera's gain and black level settings.

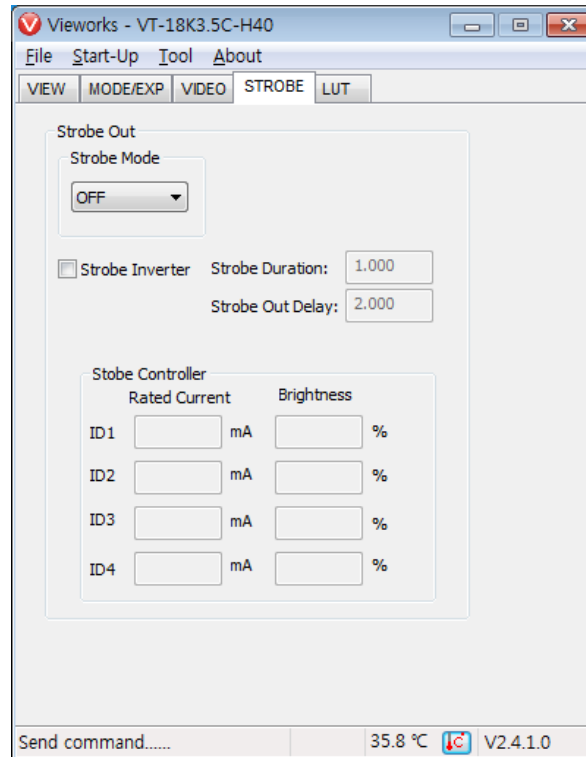


**Figure 11.8 VIDEO Tab**

- **Analog Gain:** Sets an analog gain value.
- **Digital Gain:** Sets a digital gain value.
- **Black level:** Sets a black level value.

### 11.3.4 STROBE Tab

The STROBE tab allows you to set camera's strobe out signals or dedicated strobe controllers (The Strobe Controller category will be activated when a dedicated strobe controller is connected).

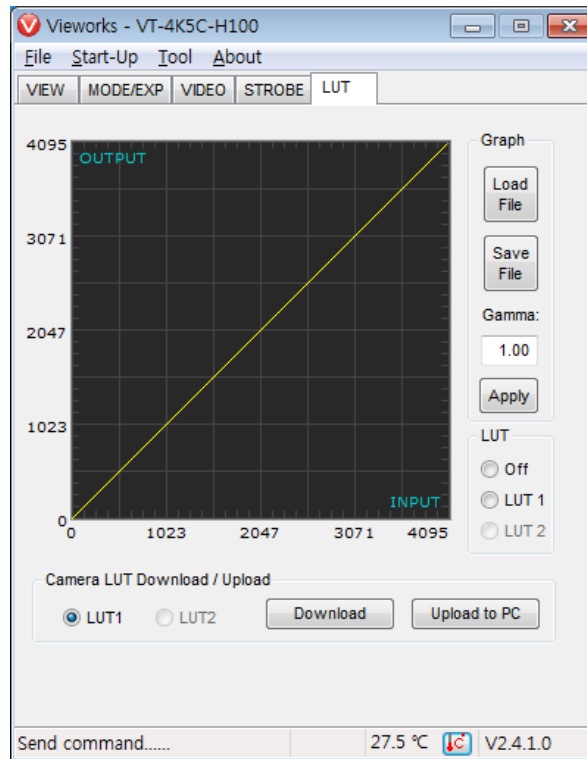


**Figure 11.9 STROBE Tab**

- **Strobe Mode:** Sets the Strobe Mode.
- **Strobe Inverter:** Inverts the output signal.
- **Strobe Duration:** Sets a duration of the pulse signal in microseconds when the **Strobe Mode** is set to **Timed**.
- **Strobe Out Delay:** Sets a delay to the current output signal in microseconds.
- **Rated Current:** Sets a rated current of the LED light when a dedicated Strobe Controller is connected.
- **Brightness:** Sets the brightness of the LED light when a dedicated Strobe Controller is connected.

### 11.3.5 LUT Tab

The LUT tab allows you to download LUT data. For more information about LUT download, refer to [Appendix B](#).



**Figure 11.10 LUT Tab**

- **Graph:** Loads LUT data from user's computer or sets a Gamma value to be applied while using a Gamma curve.
- **Camera LUT Download / Upload:** Downloads LUT data stored in user's computer to the camera (Download) or uploads LUT data stored in the camera to user's computer (Upload to PC).

## 12 Troubleshooting

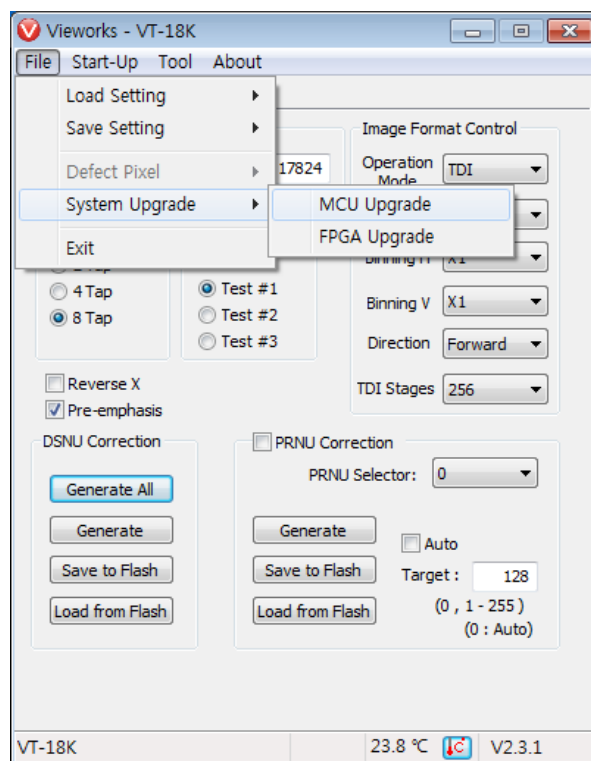
When you have a problem with a Vieworks camera, please check the followings:

- If no image is displayed on your computer,
  - Ensure that all cable connections are secure.
  - Ensure that the power supply is properly connected.
  - Ensure that trigger signals are applied correctly when you operate the camera with trigger signals.
- If images are not clear,
  - Ensure the camera lens or glass is clean.
  - Check the lens aperture is adjusted properly.
- If images are dark,
  - Ensure the camera lens is not blocked.
  - Check the line rate is set properly.
  - Check the aperture is opened properly.
  - Check the digital gain value is not set too small.
- If you identify abnormal operation or overheating sign,
  - Ensure the power supply is properly connected.
  - Stop using the camera when you notice smoke or abnormal overheating.
- If the Trigger Mode is not working correctly,
  - Ensure that the CC1 settings on the frame grabber are configured correctly when you use CC1 triggering.
  - Ensure that cable connections are secure when you use external triggering.
- If there is a communication failure between the camera and user's computer,
  - Ensure that the Camera Link cable connections are secure.
  - Ensure that you have configured a frame grabber in your computer and the camera is connected to the frame grabber correctly.

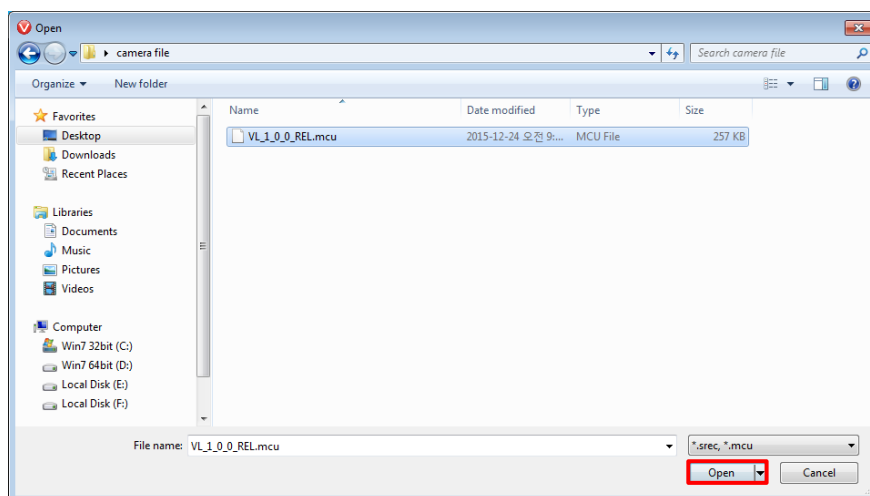
## Appendix A Field Upgrade

### A.1 MCU

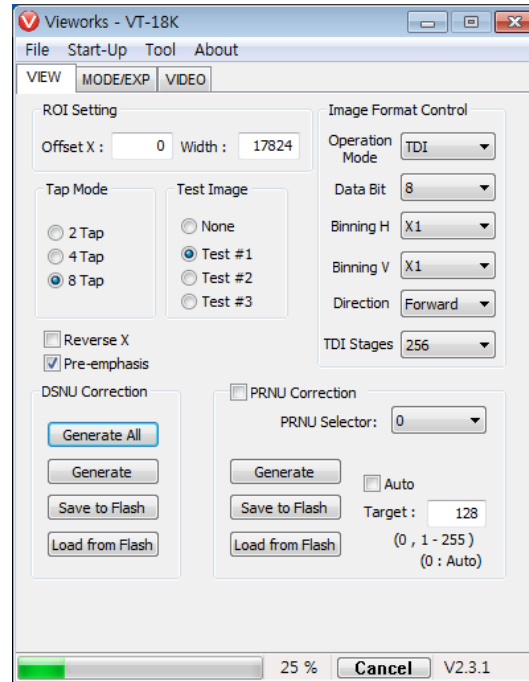
1. Select **File > System Upgrade > MCU Upgrade** in the Configurator.



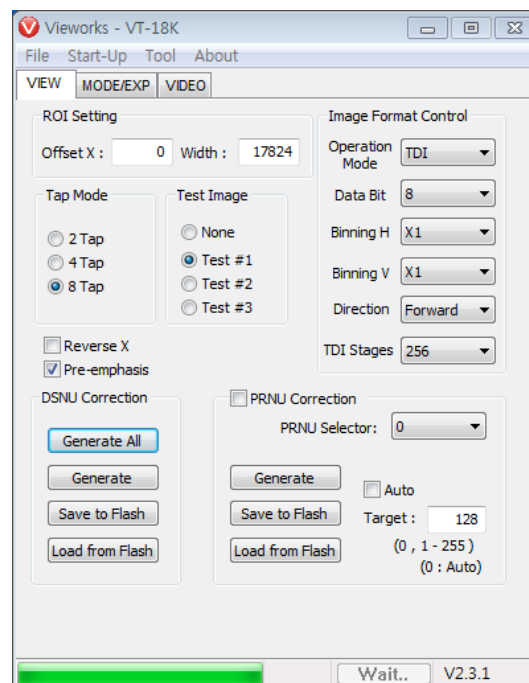
2. Search and select the provided MCU file (\*.mcu) and click **Open**.



- The Configurator starts downloading MCU upgrade file to the camera and downloading status is displayed at the bottom of the window. This process may require several minutes to complete. If you want to cancel the upgrade process, click **Cancel**.



- Once the download is complete, the saving process will begin. If a power failure occurs during the saving process, the camera cannot be restored. Make sure that the power connection is secure.

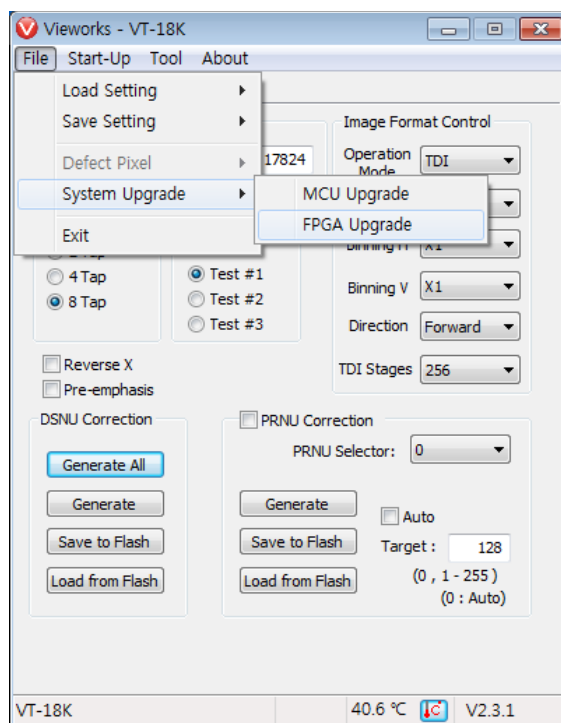


5. Once all the processes are complete, turn the camera power off and turn it back on again. Select **Tool > Terminal** and enter the 'gmv' command to confirm the version. Or, select **About > Camera Info** to confirm the MCU version.

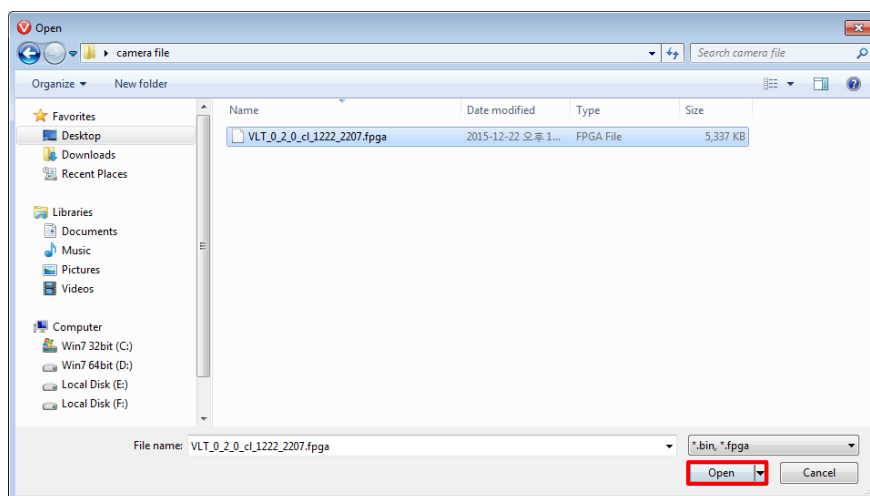


## A.2 FPGA

1. Select **File > System Upgrade > FPGA Upgrade** in the Configurator.



2. Search and select the provided FPGA file (\*.fpga) and click **Open**.



3. The subsequent processes are identical to those of MCU upgrade.

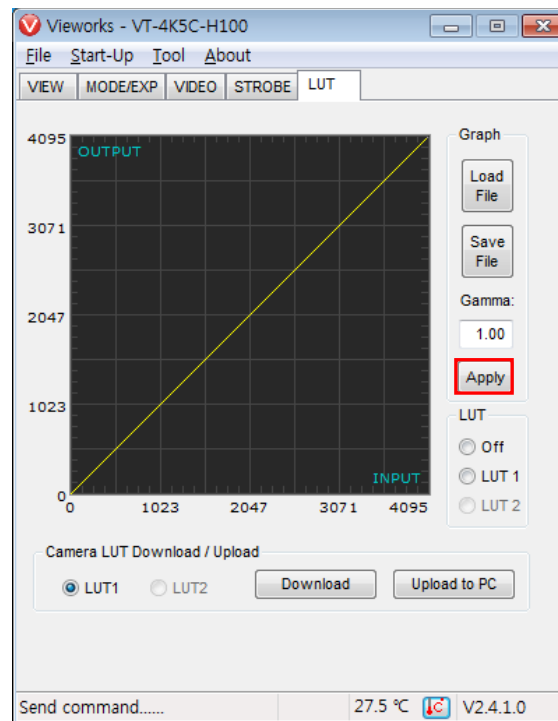


## Appendix B LUT Download

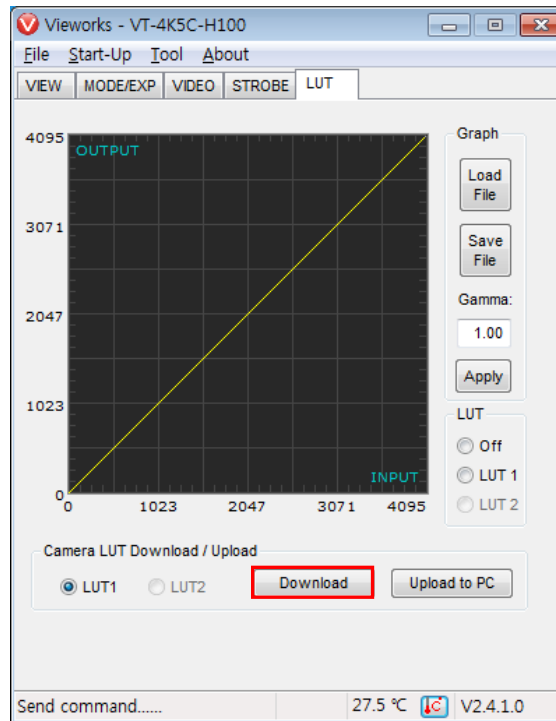
You can create LUT data in two different ways; by adjusting the gamma values on the gamma graph provided in the program and then downloading the data or by opening a CSV file (\*.csv) and then downloading the data.

### B.1 Gamma Graph Download

1. Set a gamma value in the LUT tab and click the **Apply** button.



- Click the **Download** button to download the gamma values to the camera.

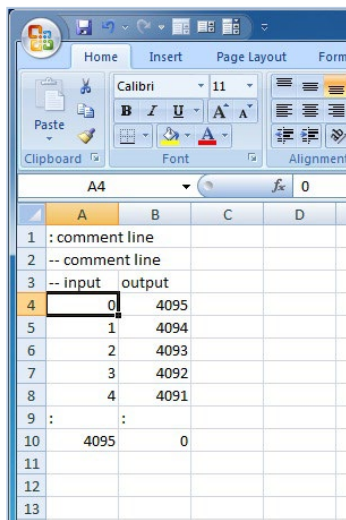


- Once the download is complete, the **Download completed** message will appear at the bottom of the window.

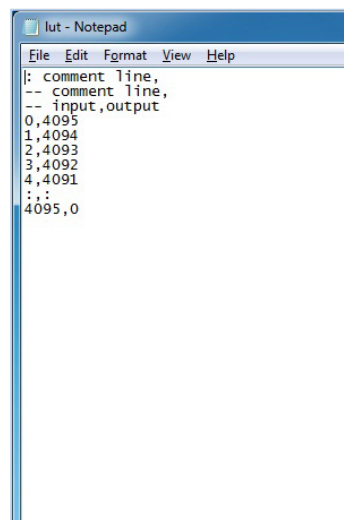
## B.2 CSV File Download

1. Create the LUT table in Microsoft Excel format as shown in the left picture below and save as a CSV file (\*.csv). The image in the right shows the created file opened in Notepad. Once the file has been created completely, change the .csv file extension to .lut. The following rules need to be applied when creating the file.

- Lines beginning with ':' or '--' are treated as notes.
- Based on the input values, make sure to record from 0 to 4095.

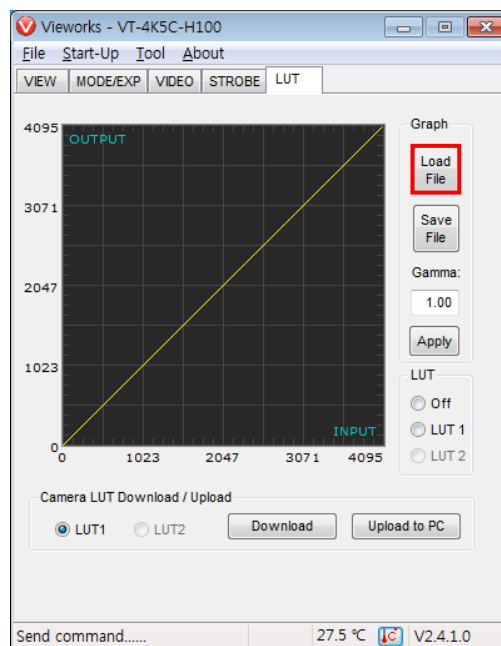


	A	B	C	D
1	:	comment line		
2	--	comment line		
3	--	input	output	
4		0	4095	
5		1	4094	
6		2	4093	
7		3	4092	
8		4	4091	
9	:	:		
10		4095	0	
11				
12				
13				

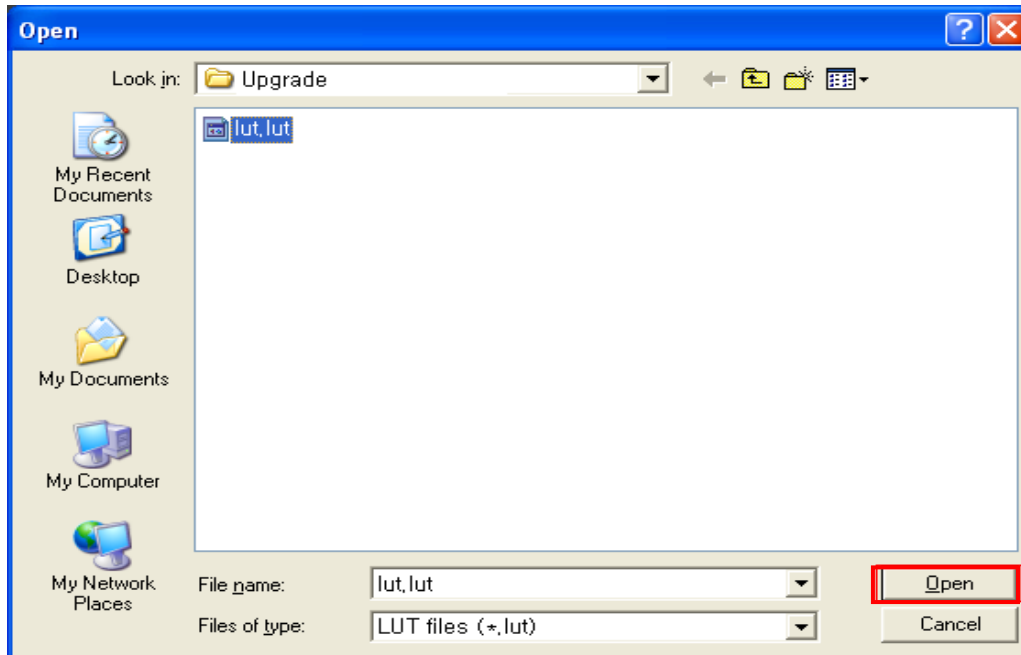


```
lut - Notepad
File Edit Format View Help
: comment line,
-- comment line,
-- input,output
0,4095
1,4094
2,4093
3,4092
4,4091
:::
4095,0
```

2. In the **LUT** tab, select **Luminance** from the **Type** dropdown list, and then click the **Load File** button.



3. Search and select the created LUT file and click the **Open** button.



4. Click the **Download** button. After completing the download, click the **OK** button to close the confirmation.

## Appendix C Correction Control

The VT Camera Link cameras provide an additional feature to adjust DSNU or PRNU correction values after the DSNU or PRNU Correction feature is enabled. You can specify a pixel or region of the sensor and the pixel information from the specified portion will be adjusted according to the user-defined DSNU or PRNU correction value. The commands related to the additional DSNU Correction are as follows.

**sdt X<sub>start</sub> X<sub>end</sub> Black Level ex. sdt 100 109 -2**

Command Syntax	Description
sdt	Applies the additional DSNU correction value to the specified region of the sensor.
Xstart	X coordinate of a start pixel
Xend	X coordinate of an end pixel (If you specify a pixel, you can leave this value blank.)
Black Level	Sets an additional DSNU correction value [Black Level value to be added to the specified region (DN, digital number)].

**Table B.1 Command related to Additional DSNU Correction**



For more details on how to save or load DSNU values, refer to [9.9 Dark Signal Non-uniformity Correction](#).

The commands related to the additional PRNU Correction are as follows.

**spt X<sub>start</sub> X<sub>end</sub> Gain ex. spt 100 109 1.1**

Command Syntax	Description
spt	Applies the additional PRNU correction value to the specified region of the sensor.
Xstart	X coordinate of a start pixel
Xend	X coordinate of an end pixel (If you specify a pixel, you can leave this value blank.)
Gain	Sets an additional PRNU correction value (Gain value to be multiplied to the specified region)

**Table B.2 Commands related to Additional PRNU Correction**



For more details on how to save or load PRNU values, refer to [9.10 Photo Response Non-uniformity Correction](#).

## C.1 Adjusting and Saving Additional DSNU Correction Value

For example, if you want to apply -2 black level from the 100<sup>th</sup> pixel to the 109<sup>th</sup> pixel, follow the procedures below.

1. Click **Tool > Terminal** in the Configurator.
2. Input the **sdt 99 108 -2** command into the Terminal input box.
3. Execute the **sdd** command to save the additional DSNU correction value in the camera's Flash (non-volatile) memory. In this case, the previous DSNU values for the current Analog Gain setting value saved in the memory will be overwritten. To ignore the adjusted DSNU correction values and load the existing values in the Flash memory, execute the **ldd** command.

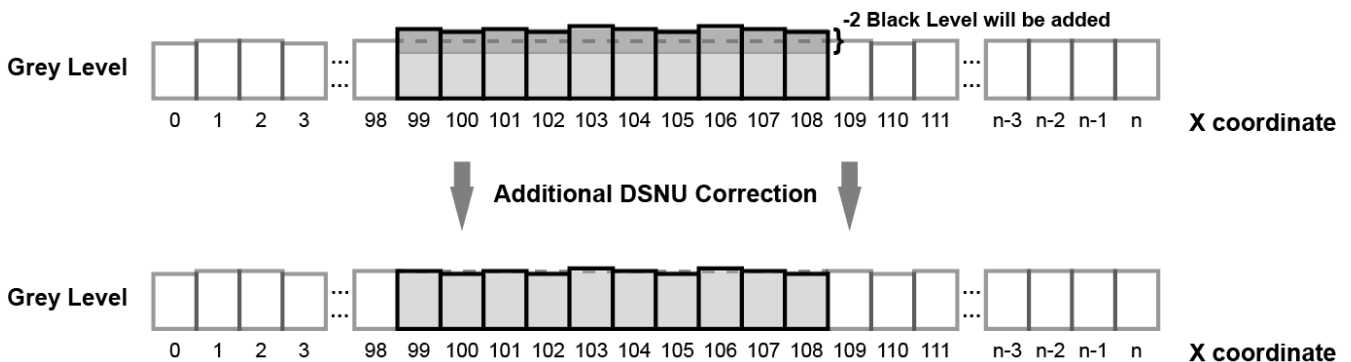


Figure B.1 Additional DSNU Correction

## C.2 Adjusting and Saving Additional PRNU Correction Value

For example, if you want to apply  $\times 1.1$  gain from the 100<sup>th</sup> pixel to the 109<sup>th</sup> pixel, follow the procedures below.

1. Click **Tool > Terminal** in the Configurator.
2. Input the **spt 99 108 1.1** command into the Terminal input box.
3. Specify a location to save by using the **spi 0/1/2/3/4** command and execute the **spd** command to save the additional PRNU correction value in the camera's Flash (non-volatile) memory. The existing values in the Flash memory will be overwritten. To ignore the adjusted PRNU correction values and load the existing values in the Flash memory, specify a location to load from by using the **spi 0/1/2/3/4** command and execute the **lpd** command.

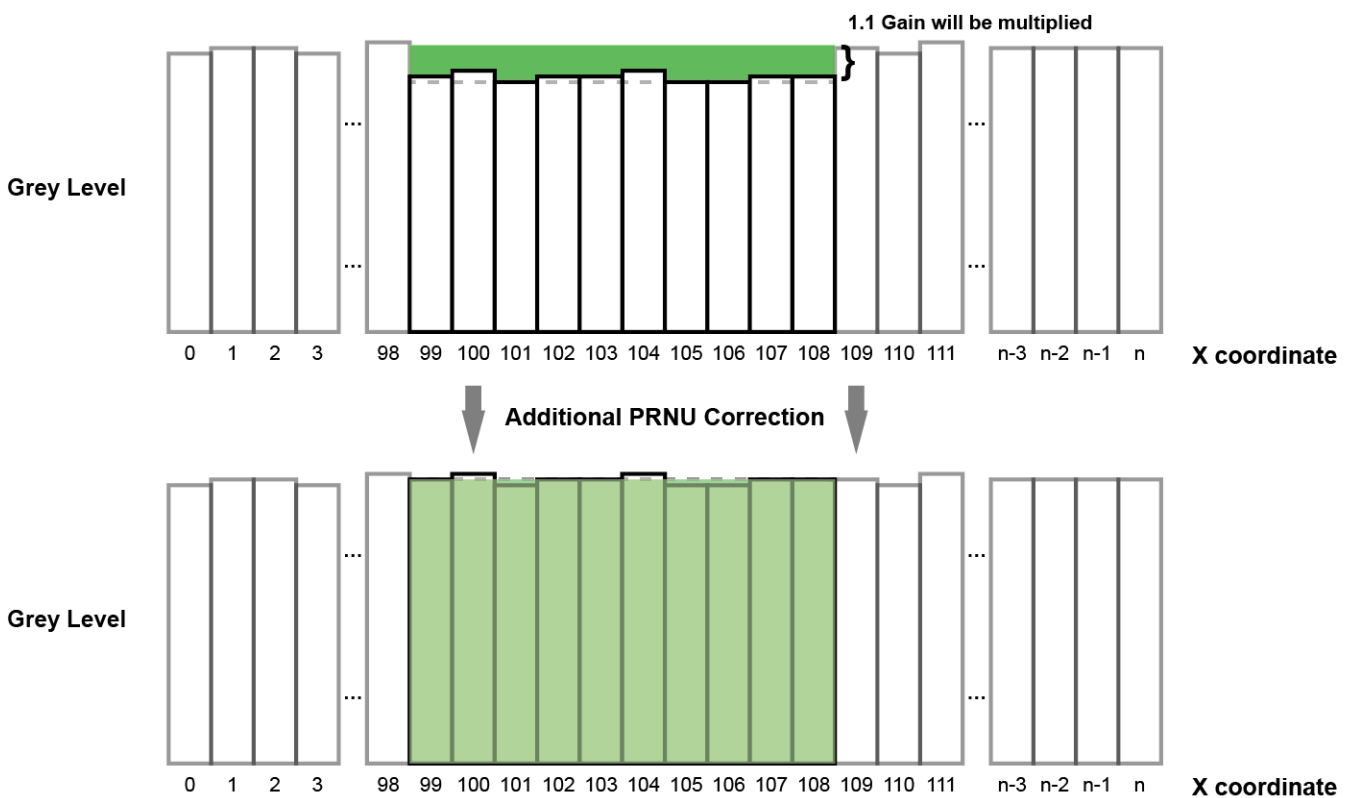
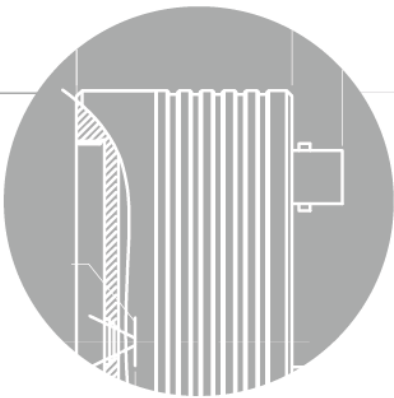
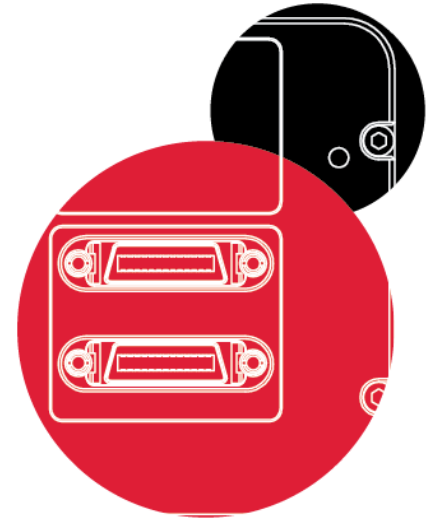
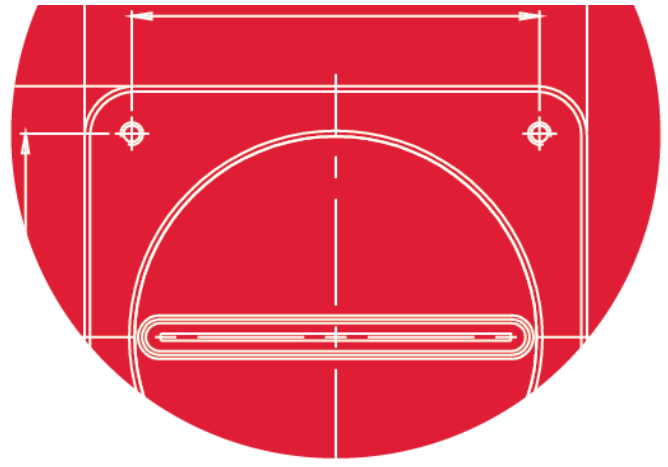


Figure B.2 Additional PRNU Correction



Before executing the **spt** command, if you set the **PRNU Mode** to **On** by using the **sprnu** command, you can determine the adjusted PRNU correction values in the acquired line images.



## Vieworks Co., Ltd.

41-3, Burim-ro, 170beon-gil,  
Dongan-gu, Anyang-si, Gyeonggi-do  
14055 Republic of Korea

Tel: +82-70-7011-6161

Fax: +82-31-386-8631

<http://vision.vieworks.com>

[vision@vieworks.com](mailto:vision@vieworks.com)